

Appeal

Kenya

Response to drought situation - KEN111

Appeal Target: US\$ 14,132,844

Balance Requested: US\$ 9,873,582

Geneva, 12 August 2011

Dear Colleagues,

More than 3.2 million Kenyans¹ are in need of humanitarian aid after four years of successive drought. The arid and semi-arid areas (ASAL) of the country are the most affected. The drought is due to the La Niña effect, a phenomenon that reduces moisture in the atmosphere when the surface of the Pacific Ocean cools. The months of October, November and December 2010 were unusually dry followed by a failure of the 2011 long rains expected in April and May making recovery difficult for the affected population. According to the UN OCHA Eastern Africa's drought analysis, this has been the lowest level of rainfall in 60 years.² The ASAL areas affected include northern, south eastern and coastal marginal agricultural areas.

ACT Alliance members in Kenya are working to provide drought affected households with relief food, water and other life supporting services including livestock interventions targeting pastoralists. The intervention is aimed at providing targeted families with emergency safety nets and cushioning them from the adverse impact of the drought. ACT members will particularly target families with indentified vulnerable groups and those with children under the age of five years, with supplementary feeding. The appeal activities will also provide affected families with appropriate early-recovery opportunities such as restocking of herds, rehabilitation of low cost water structures; water bore holes, drought resistant crop varieties and other appropriate interventions to enable affected people to recover from the effects of the drought.

This appeal will target approximately **60,922** households. The total financial target for this appeal is US\$ **14,132,844**. US\$ **4,259,262** has already been received or pledged and the amount requested is US\$ **9,873,582** for a period one year starting from August 2011 to July 31st 2012.

1 http://www.fews.net/docs/Publications/Horn_of_Africa_Drought_2011_06.pdf

2 <http://www.bbc.co.uk/news/world-africa-14020452>

This full appeal replaces the preliminary appeal issued on 22nd July 2011.

ACT members in Kenya are Anglican Church in Kenya (ACK), Christian Aid (CAid), Christian Reformed World Relief Committee (CRWRC), Church World Service (CWS), Diakonie Emergency (DKH), The Lutheran World Federation (LWF), National Council of Churches in Kenya (NCCK), Fin Church aid (FCA) and Norwegian Church Aid (NCA).

Project Start/Completion Date: August 1st 2011 – July 31st 2012

Reporting schedule:

ACT Member	Interim narrative & financials	Final narrative & financials	Audit reports
ACK	31st January , 2012	30th September, 2012	31st October, 2012
LWF/DWS	31st January , 2012	30th September, 2012	31st October, 2012
NCA	31st January , 2012	30th September, 2012	30st October, 2012
CWS	31st January , 2012	30th September, 2012	31st October, 2012
NCCK	31st January , 2012	30th September, 2012	31st October, 2012
CRWRC	31st January , 2012	30th September, 2012	31st October, 2012

Summary of Appeal Targets, Pledges/Contributions Received and Balance Requested (US\$):

Appeal Target	14,132,844
Less: Pledges/Contr Recd	4,259,262
Balance Requested from ACT Alliance	9,873,582

	Appeal Target	Less Pledges/Contr Recvd	Less unallocated Pledges	Balance Requested
ACK	950,991	94,424		856,567
LWFTtotal	1,984,415	242,254		
<i>LWF/DWS</i>	<i>1,546,007</i>			1,303,753
<i>LWF-ELCK</i>	<i>223,699</i>			223,699
<i>LWF-KELC</i>	214,709			214,709
EVALUATION-Horn response	15,000	0		15,000
NCA	2,367,995	32,286		2,335,709
NCCKTOTAL(NCCK,PCEA,MCK)	1,670,431	38,500		1,631,931
CRWRC	6,930,790	3,751,498		3,179,292
CWSTOTAL	213,222	69,000		144,222
<i>CWS1</i>	<i>33,641</i>			
<i>CWS2-ACKKitui</i>	<i>113,779</i>			
<i>CWS3-CRI</i>	<i>65,802</i>			
TOTAL	14,132,844	4,227,962	31,300	9,873,582

Please kindly send your contributions to either of the following ACT bank accounts:

US dollar

Account Number - 240-432629.60A

IBAN No: CH46 0024 0240 4326 2960A

Euro

Euro Bank Account Number - 240-432629.50Z

IBAN No: CH84 0024 0240 4326 2950Z

Account Name: ACT - Action by Churches Together

UBS AG

8, rue du Rhône

P.O. Box 2600

1211 Geneva 4, SWITZERLAND

Swift address: UBSWCHZH80A

Please also inform the Chief Finance Officer Jean-Daniel Birmele (jbi@actalliance.org) and the Regional Programme Officer, Katherine Ileri of all pledges/contributions and transfers, including funds sent direct to the implementers.

We would appreciate being informed of any intent to submit applications for EU, USAID and/or other back donor funding and the subsequent results. We thank you in advance for your kind cooperation.

For further information please contact:

ACT Regional Programme Officer, Katherine Ileri (phone +41 22 791 6040 or mobile phone +41 79 433 0592)

or

ACT Deputy General Secretary, Rebecca Larson (phone +41 22 791 6069 or mobile phone +41 79 376 1711)



Rebecca Larson
Deputy General Secretary
ACT Alliance Secretariat

Table of contents

LIST OF ABBREVIATIONS.....	5
I. REQUESTING ACT MEMBER INFORMATION	6
The Anglican Church of Kenya- Directorate of Social Services (ACK DOSS).....	6
The Lutheran World Federation (LWF)	6
The National Council of Churches of Kenya (NCCK).....	7
Norwegian Church Aid (NCA)	8
Church World Service (CWS)	8
Christian Reformed World Relief Committee (CRWRC- KENYA).....	9
II. IMPLEMENTING ACT MEMBER & PARTNER INFORMATION.....	10
TARGET AREA	11
III. DESCRIPTION OF THE EMERGENCY SITUATION	12
IV. DESCRIPTION OF THE SITUATION IN THE AREA OF PROPOSED RESPONSE	14
Current situation in the area of proposed response	14
Impact on human lives in the area of proposed response	15
Description of the damages in the area of proposed response.....	16
Security situation in the area of proposed response	17
V. TARGETED BENEFICIARIES.....	18
Criteria for the selection	24
VI. PROPOSED EMERGENCY ASSISTANCE & IMPLEMENTATION.....	25
Goal	25
OBJECTIVES.....	25
EXPECTED OUTPUTS AND INDICATORS.....	25
Indicators	29
ACTIVITIES	29
Recovery and rehabilitation activities.....	30
Provide communities with drought tolerant planting seeds	30
Project implementation methodology	31
Planning assumptions, constraints and prioritization.....	33
Implementation Timetable	33
Transition or Exit strategies	33
Cross Cutting Issues.....	34
VII. ADMINISTRATION AND FINANCE	35
VIII. MONITORING, REPORTING & EVALUATIONS.....	35
IX. COORDINATION	36
X. BUDGETS	36
ACK DOSS.....	36
CHRISTIAN REFORMED WORLD RELIEF COMMITTEE (CRWRC- KENYA)	40
LWF.....	42
LWF-KELC.....	44
LWF-ELCK.....	45
The National Council of Churches of Kenya (NCCK).....	46
Norwegian Church Aid	50
CWS	51
CWS-ACK Kitui Diocese.....	52
CWS_COMMUNITY RESOURCE INITIATIVE	54
ANNEX 1-BACKGROUND INFORMATION OF THE IMPLEMENTING PARTNERS (IPS).....	55

LIST OF ABBREVIATIONS

ACT	-	Action by Churches Together
ACK	-	Anglican Church of Kenya
CWS	-	Church World Service
NCA	-	Norwegian Church Aid
LWF	-	The Lutheran World Federation
NCKK	-	National Council of Churches of Kenya
ELCK	-	Evangelical Lutheran Church of Kenya
KELC	-	Kenya Evangelical Lutheran Church
CRWRC	-	Christian Reformed f World Relief Committee
IP	-	Implementing Partner
IM	-	Implementing Member
DSG	-	District Steering Group
GOK	-	Government of Kenya
WFP	-	World Food Programme
UNICEF	-	United National International Children Education Fund
AKF	-	ACT Kenya Forum
UNHCR	-	United Nations High Commission for Refugees
KRAP	-	Kakuma Refugee Assistance Project
NGO	-	Non-Governmental Organization
KRC	-	Kakuma Refugee Camp
CBTD	-	Community Based Targeting Distribution
NFI	-	Non-Food Items
CCS	-	Christian Community Services
IDCCS	-	Inter Diocesans Christian Community Services
IDP	-	Internally Displaced People
NGOs	-	Non –Governmental Organization
RLA	-	Requesting Lead Agency
RACIDA	-	Rural Agency for Community Development and Assistance
CRI	-	Community Resource Initiative

I. REQUESTING ACT MEMBER INFORMATION

Anglican Church of Kenya (ACK)
The Lutheran World Federation (LWF)
Norwegian Church Aid (NCA)
Church World Service – East Africa (CWS-EA)
National Council of Churches of Kenya (NCCK)
Christian Reformed World Relief Committee (CRWRC)

The Anglican Church of Kenya- Directorate of Social Services (ACK DOSS)

The Anglican Church of Kenya (ACK) is the second largest Christian Church in Kenya with a following of over 5 million. Through its Directorate of Social Services (ACK DOSS) the Anglican Church in Kenya, coordinates the Christian Community Services (CCS) regional offices which are responsible for the implementation of integrated community based programs in food security, water, sanitation, education, primary health care, disaster preparedness, disaster mitigation, HIV/AIDS, civic education, micro-enterprise programs and skills development. For effective delivery of these services, qualified staffs have been hired in all relevant fields mentioned above.

The 9 regional CCS offices are overseen by a regional coordinator and supported by technical staff in the fields of health, water, sanitation, education, agriculture, disaster management and financial management. The staffs are facilitated with equipment including vehicles, computers and offices among others. All 9 CCS regional offices have more than 300 staffs. ACK DOSS is the national office which coordinates and facilitates national cross cutting issues and policies including; humanitarian programmes (disaster preparedness and response), advocacy, HIV/AIDS, documentation, communication, information technology and research. CCS operates within the ACK Church network of 1,800 parishes.

ACK DOSS has a track record of implementing emergency response, disaster preparedness and disaster mitigation programs for over 20 years. In this appeal ACK DOSS will be channelling its assistance through their respective CCS structures in the areas targeted in four ACK regions including; Nakuru, Kajiado, Mt. Kenya and Ukamba.

ACK DOSS is a member of the ACT Alliance and is committed to the basic principles of humanitarian aid as laid down in ACT Alliance policies and guidelines as well as the Code of Conduct of the Red Cross and Red Crescent and non-governmental aid organizations in the context of emergency assistance.

The Lutheran World Federation (LWF)

The Lutheran World Federation, Department for World Service (LWF) Kenya Programme coordinates emergency, relief, recovery and rehabilitation operations in Kakuma refugee camp and Turkana district in North western Kenya. LWF/DWS started its operations in Kakuma Refugee Camp (KRC) in 1992 and the program was expanded in 1999 to include assistance to the local host community. Starting from August 2007 on request by the Government of Kenya and UNHCR, LWF/DWS started to assist displaced people living in the Dadaab camps.

The overall goal of Turkana project is to promote the viability of the pastoral economy in the host community areas, so as to mitigate the effect of future adverse weather effects (floods and/or droughts) on the people's food security and livelihoods. Currently, the host community project covers water provision, peace promotion/conflict prevention and sustainable livelihoods with special focus on livestock and income generating activities. The project also covers HIV/AIDS prevention and plans to expand to cover human health and disaster response/ mitigation. The LWF Turkana project area covers Kakuma, Oropoi and Lokichoggio which are divisions of Turkana North district formerly a part of the older and larger Turkana district.

LWF/DWS is also the requesting member of ACT for activities to be implemented by the LWF member churches, the Evangelical Lutheran Church in Kenya (ELCK) and the Kenyan Evangelical Lutheran Church (KELC).

LWF is a member of ACT Alliance and is a signatory to (amongst others) the SPHERE Project, Red Cross / NGO Code of Conduct, People in Aid and is a member of the Humanitarian Accountability Partnership (HAP).

The National Council of Churches of Kenya (NCCK)

The National Council of Churches of Kenya was founded in 1908 as an umbrella organization of Christian churches in Kenya. Today, the NCCK brings together 26 protestant member churches and 15 associate member organizations. Ever since it's founding, the NCCK has been at the forefront of the country's development: spiritually, economically and politically. Throughout the years, NCCK has advocated and worked towards the creation of a democratic, just and peaceful society in Kenya.

Representatives of the member churches meet yearly in the general assembly, and elect an executive committee, who meets on a quarterly basis. The management team headed by the Secretary General is the professional team that does the day-to-day running of the council activities. NCCK has an extensive grass-rooted network through its member churches including all ethnic communities and a regional structure that covers the entire country which makes it an ideal platform for channelling direct assistance to grass root communities. In addition, the NCCK is considered to be a strong actor in Kenya's civil society movement.

Over the years NCCK has participated in response to humanitarian needs in Kenya and was involved in addressing the ethnic clashes in the country during the 1990's through the provision of emergency relief support for the conflict survivors in the Rift Valley, Nyanza and Western Provinces. Since then, the council has been responding to recurring emergencies in the country.

In 2007 – 2008 NCCK was involved in emergency response during Kenya's post election violence that had left about 1,300 people dead and 600,000 displaced. NCCK provided food Aid, Non Food Items and psycho-social support to vulnerable groups and those in the IDP camps.

During the post election violence, NCCK responded to the immediate needs survivors in various parts of the country.

In 2009 drought in Kenya, NCCK in partnership with Diakonia Sweden provided relief to a total of 170,178 vulnerable individuals in four NCCK Regions; Central, Lower Eastern, Nairobi and the Coast . The specific areas targeted included; Kathonzi, Yatta, Ganze, Makuyu and Mathare slums. The drought affected 850,000 school children who were under the expanded school feeding program; 150,000 displaced persons following the 2008 post-election crisis; 2.2 million HIV and AIDS affected including orphans and 3.5 million urban food-poor living in slum areas.

A Major lesson from these interventions is the need to direct more efforts to long term food security measures on the basis that food aid is short lived and may create dependency and discourage innovativeness or participation in viable sustainable development initiatives.

In this Appeal, two NCK regions will be involved in the drought response. These are regions in areas targeted for response by ACT Alliance Kenya Forum (AKF) members that include; Lower Eastern and Turkana District. The two areas are within the geographical coverage of both NCK Lower Eastern and North Rift regions respectively.

NCK will facilitate relief efforts to assist populations most affected by the current drought, through food aid, school feeding activities; provision of farm inputs (seeds) to farmers; and advocacy to the relevant authorities at all levels.

NCK is a member of ACT alliance and is committed to the basic principles of humanitarian aid as laid down in ACT Alliance policies and guidelines as well as the Code of Conduct of the Red Cross and Red Crescent and non-governmental aid organizations in the context of emergency assistance.

Norwegian Church Aid (NCA)

Norwegian Church Aid (NCA), has been involved in major and moderate emergency operations in many parts of the world for more than half a century. NCA operates in the Eastern Africa region covering Sudan, Uganda, Rwanda, Tanzania, Kenya, Burundi, Somalia, and Democratic Republic of Congo, Ethiopia, and Eritrea. The network resource and the long built institutional capacities are integral strengths. Over the last 3 decades NCA has been responding to emergency in the Eastern Africa region and in Kenya for the last 12 years. NCA continues to play a leading role in the formation and facilitation of the ACT Kenya Forum (AKF) and has been instrumental in mobilizing the active participation of key local partners including the Anglican Church of Kenya (ACK), the Presbyterian Church in East Africa (PCEA) and the National Council of Churches of Kenya (NCK).

During the post election violence in Kenya, NCA was in the forefront of mobilizing the faith communities' and has been closely involved in the facilitation and coordination of the AKF members' response to humanitarian disasters. In Kapedo/ East Baringo district, the Full Gospel Church of Kenya (FGCK) has been NCA's long standing partner in an ongoing disaster risk reduction intervention targeting vulnerable communities in Baringo district. For this current appeal, FGCK will be the implementing partner in the area.

NCA is a member of ACT Alliance and is committed to the basic principles of humanitarian aid as laid down in ACT Alliance policies and guidelines as well as the Code of Conduct of the Red Cross and Red Crescent and non-governmental aid organizations in the context of emergency assistance.

Church World Service (CWS)

Church World Service (CWS) is the relief, development and refugee assistance ministry of 36 Protestant, Orthodox, and Anglican denominations in the USA. CWS works in more than 80 countries, maintaining programmes in social and economic development, emergency response, assistance to refugees, education and advocacy and ecumenical partnership. CWS has been involved in major and moderate emergency operations in many parts of the world for more than half a century. Its Regional Office for Eastern Africa covers the countries of Sudan, Uganda, Rwanda, Tanzania, Kenya, Burundi, Somalia, Ethiopia, Eritrea and Madagascar.

The CWS model for engagement is through partnership with local NGOs and faith based organizations. Through facilitation, capacity building and financial support, CWS seeks to empower partners through this assistance. In Kenya, CWS and its local and overseas partners have been involved in building the capacities of grass root churches and communities in order to equip them with the skills to monitor and

respond to emergencies within their constituencies. This has been done through Disaster Management Training (DMT) workshops across the NCKK regions.

The impact of this intervention has improved the quality of emergency response intervention with precise and accurate information on disaster victims received from grass root ACT members in the recent past. The networks that have emerged as a result of the trainings are gradually enhancing the quality of implementing ACT Appeals and have gone along way in strengthening the institutional capacities of the grass root churches. CWS facilitated NCKK and KELC to respond to IDP needs during the Post Election Violence in Kenya. In this Appeal CWS will work with CRI & ACK Kitui diocese to address the urgent needs in targeted areas of Ukambani and some pockets of Tana River district.

CWS is a member of ACT alliance and is committed to the basic principles of humanitarian aid as laid down in ACT Alliance policies and guidelines as well as the Code of Conduct of the Red Cross and Red Crescent and non-governmental aid organizations in the context of emergency assistance.

Christian Reformed World Relief Committee (CRWRC- KENYA)

Christian Reformed World Relief Committee (CRWRC) began in 1962 and has been implementing relief projects ever since. CRWRC is a development and disaster response and rehabilitation agency legally incorporated in Canada and the US as a non-governmental and non-profit agency and registered with the Charitable Tax Number 118857366 RR0001. During this period, relief programs have been implemented by CRWRC in over 29 different countries.

The Christian Reformed World Relief Committee (CRWRC) has been working in Kenya since 1983. Currently, CRWRC has 8 full-time Disaster Response staff members who facilitate programs in Kenya. It has mounted multiple relief interventions in Kenya. In 2003, 2 food security projects were completed in response to the chronic disaster situation. In 2005 already, CRWRC was providing NFIs to resettled families, and continues to provide seed inputs to increase food security. In 2006, a \$2 million CFGB project addressed 15,000 families for a protracted period of 6 months in food aid during the drought period, as well as starting in conflict areas. In 2006 the drought resistant grain Amaranth was introduced to help mitigate against the chronic drought. This project continued in 2008. Finally since March 2007 CRWRC has been implementing a \$1 million relief project supporting households already displaced by ongoing conflict in Mount Elgon, Western Kenya, in partnership with RCEA and the Kenyan Red Cross (KRC).

In January 2008, following the post-election conflict, CRWRC met the immediate and short-term basic human needs of approximately 5025 conflict affected displaced households that sought refuge in Reformed Church parishes in Rift Valley and Western Kenya. This was done with CIDA funds. CIDA WBS Element: M-012741-001-PR1. The project interventions included the distribution of essential non-food items aimed at improving post-disaster conditions, the maintenance of sanitation shelters, the sensitization of IDPS on hygiene issues, the facilitation of medical camps along with the provision of basic medical supplies, and the promotion of mental health through trauma counseling.

CRWRC will be implementing the proposed response in partnership with the following local organizations with which there is a long standing relationship and community experience and are fully aware and compliant with ACT policies and international standards and best practices:

II. IMPLEMENTING ACT MEMBER & PARTNER INFORMATION

There are 14 ecumenical agencies and Churches that form the ACT Kenya Forum (AKF) representing the ACT Alliance network in Kenya. These include members and forum guests:

1. All African Conference of Churches
2. Anglican Church of Kenya (ACK)
3. Christian Reformed World Relief Committee(CRWRC)
4. Church World Service(CWS)
5. Diakonie Katastrophenhilfe (DKH)
6. The Lutheran World Federation(LWF)
7. National Council of Churches of Kenya(NCCK)
8. Norwegian Church Aid (NCA)
9. Christian Aid (CA)
10. Lutheran World Relief

Guests

11. The Presbyterian Church of East Africa
12. Evangelical Lutheran Church in Kenya(ELCK)
13. Kenya Evangelical Lutheran Church in Kenya(KELC)
14. Methodist Church in Kenya

The AKF Joint Appeal will have two levels of implementation partnership:- the Requesting Lead Agencies (RLAs) and the implementing partners (IPs). The RLA in this case refers to the 6 AKF members who by their own rights are full ACT Alliance members and will be responsible for requesting funding directly from ACT Alliance network and further be responsible for both reporting and coordination of interventions that are within their designated geographical areas and working closely with their respective implementing partners (IPs), where this is applicable. The IPs will be AKF members, AKF guests and other strategic implementing organizations of RLAs.

The non-AKF strategic partner organisations in this appeal are:

- RACIDA
- Community Resource Initiative
- Reformed Church of East Africa
- Nazarene Compassionate Ministries
- The Full Gospel Church of Kenya
- The ACK Kitui Diocese

Annex One provides a brief summary background information of all the Implementing partners including forum guests and the strategic partner organisations involved in this appeal.

Table showing the requesting ACT Alliance members, their Implementing partners and the respective locations of response

ACT REQUESTING AGENCY	AKF IMPLEMENTING AGENCIES AND PARTNER	TARGET AREA
ACK	ACK CCS in Nakuru, Mt Kenya, Ukamba and Kajiado	Ukamba CCS - Kisasi, Nzambani, Ngalange, Syekulu, Katithi and Kathonzweni Locations Mt. Kenya CCS- Tingithi, Mwiyumililye, Lamuria Locations Nakuru CCS - IDP camps Mahimahiu, Samburu, East pokot Locations Kajiado –Turusei, Kisongo, Mbirikani, Kekonyoke Locations
LWF	LWF	Turkana North- Kakuma, Oropoi, Lokichongioand Nanam Divisions
	ELCK	Samburu, Kjiado,Marsabit, Taveta, Kitui, Tharaka and Narok and West Pokot
	KELC	Tana River, Kajiado , makueni Taita Taveta, Kilifi and Kwale counties
NCKK	PCEA	Mutha,Kitui south, Laikipia
	Respective NCKK Regions	10 administrative districts namely, Turkana, West Pokot, Tharaka, Garissa, Embu/Mbeere, Kilifi, Kwale, Kitui south, Kajiado and Narok districts. Nyandarua districts
	MCK	Tharaka, Wajir, Embu/Mbeere
NCA	RACIDA	4 out of 18 divisions in the larger Mandera district namely: Malkamari, Rhamu, Rhamu Dimtu and Ashabito
	FGCK	Central Baringo, North Baringo and East Pokot in the Great Rift Valley Province
CWS	ACK –Kitui Diocese	Nzauni location, Migwani district
	CRI	Kibwezi
CRWRC	ACK	
	RCEA	South Turkana
	NCA	Narok

III. DESCRIPTION OF THE EMERGENCY SITUATION

Background

Kenya has experienced successive droughts for the last four years. The Arid and Semi Arid Areas (ASAL) are the worst affected. Because of La Niña effect, a phenomenon that reduces moisture in the atmosphere when the surface of the Pacific Ocean cools. The months of October, November and December 2010 were unusually dry in Kenya. The drought situation affecting Kenya was further exacerbated when the 2011 long rains expected in April / May also failed.

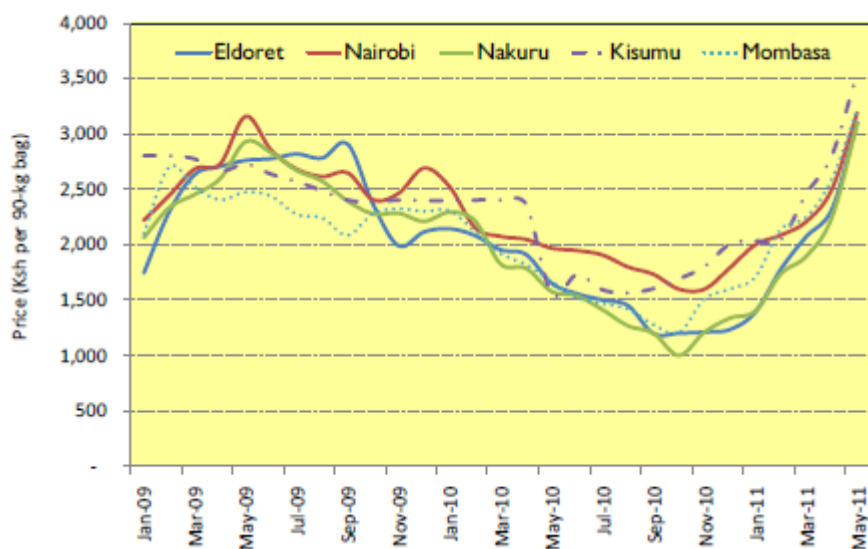
At least 3.2 million people are facing starvation as a result of the prevailing drought in Kenya's ASAL areas and the severity of this drought and the resultant food crisis in the country has reached a crisis proportions as is corroborated by the reports of many humanitarian agencies.

A recent report by the Regional Learning and Advocacy Program (REGLAP), a group of NGOs led by Oxfam Great Britain, the current drought is severely affecting pastoralists and the health of their families behind their coping capacity to a point where communities can no longer survive without external support.

According to a recent UN OCHA report on the [current] drought situation, 2011 has been the driest period in the Eastern Horn of Africa since 1995; while various media reports, such as BBC, report the lowest level of rainfall in many areas in 60 years. Food security has deteriorated for most households in all the Arid and Semi-Arid regions in Kenya as grazing land has dried up or is rapidly being depleted. The deterioration caused by the failure of the 2011 long-rains was hastened by unfavorable rains in October to December 2010 in many areas which severely limited the recharging of water sources and regeneration of pasture.

As of early July, the situation in Northern Kenya had reached an emergency level with urgent need for external assistance. While the current emergency is mostly felt in North and Eastern Kenya (Marsabit, Moyale, Wajir, Garissa, Isiolo, and Turkana) areas reporting serious food deficits include the southeastern marginal districts of Kitui, Makueni, Mwingi, Tharaka and Mbeere and the coastal region including Malindi, Kwale, Kilifi, and Taita Taveta.

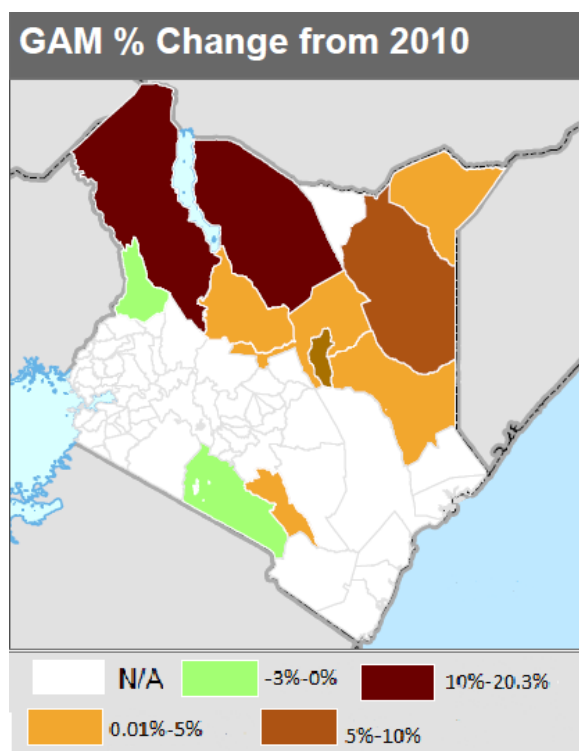
Figure 1.1: Trends in maize prices in Kenya (source: FEWSNET)



Food

Compounding the poor rainfall is the record increase in food prices. The price of maize, a staple food in most of the country, has doubled in the last five months. This rapid increase has pushed marginal households into a state of food insecurity. At the same time food prices have dramatically increased, the price of livestock has decreased, further limiting the buying power of the pastoralist household. Cattle prices have dropped by 15

percent within the month, and are about 30 percent below their 5year average in many districts. Low livestock prices coupled with high cereal prices, which are 30-60 percent above 5year averages, have eroded pastoralists' terms of trade by up to 50 percent.



This set-back in livestock prices is particularly discouraging in light of the fact that prices were just beginning to normalize, or even increase, in many areas hard hit by the 2009 drought. FAO reports in their consolidated appeal for 2011, that “livestock prices in the ASALs increased by 63 and 34 percent for cattle and goats, respectively, between June 2009 and June 2010. This represents a 22 percent rise in price against the five-year average. Although food prices remain high in terms of trade, livestock prices have comparatively improved. It is now possible to purchase an average of 51 kg of maize for the price of one goat (compared to just 30 kg of maize at the same time in 2009)”.

The drought is having a severe impact across Kenya. In addition to the food shortages brought on by failed crops and increasing food prices, particularly of maize (which is Kenya's staple food), the drought is impacting water supplies, livestock health and leading to increased incidences of conflict. High rates of malnutrition are reported in most of the affected areas, at levels above the emergency threshold (i.e. 15% GAM).

Water

The number of households requiring water sourced from trucks has increased substantially, particularly in Marsabit, Mandera, Isiolo, Wajir, eastern southern parts of Turkana and parts of Garissa. Already, conflicts over water have been reported in Mandera, Wajir, Isiolo, Tana River, Baringo, and West Pokot.

Agriculture

For poor and very poor farm households in the southeastern marginal agricultural areas, food security has already deteriorated to crisis levels. This situation has further been complicated by rising malnutrition among people as families resort to skipping meals, selling their capital assets to buy food while at the same withdrawing children from school as they are forced to migrate with the remaining livestock in order to find water. Food security for the poor and very poor households in northern and eastern pastoral areas has deteriorated to crisis and emergency levels and requires urgent interventions to avert further loss of life

Livestock

Depletion of grazing resources has precipitated the widespread migration of the surviving livestock into areas outside of the pastoral areas, including movement into Uganda from Turkana and West Pokot; into Ethiopia from parts of Marsabit and Moyale; into Isiolo and Meru North, from Moyale, Marsabit, Wajir, Garissa, and Samburu; and toward the mixed farming zones in Tana River, Baringo, and Laikipia. Water and pasture are in short supply here. Water and pasture in most pastoralist districts has been depleted beyond un-preceded levels, while the surviving livestock are getting weaker and are unable to produce milk and /or offer meaningful returns in collapsing livestock markets.

The value of livestock which is the people's main asset in many of the pastoralist areas which are the worst affected areas has plummeted and livestock markets have collapsed. This has led to massive cross border movement of livestock, over 70% in the case of livestock in Mandera north, leaving behind the weak and sickly animals for the many women and children left behind to depend upon. Collapsed livestock markets coupled with animals increasingly losing their body condition for lack of pasture and water has seriously eroded purchasing power of the affected communities and largely decimated their livelihoods. This opens a real and present danger for starvation and probable large-scale loss of human life.

IV. DESCRIPTION OF THE SITUATION IN THE AREA OF PROPOSED RESPONSE

Current situation in the area of proposed response

The AKF members resolved to target their assistance to areas worst hit by the current drought informed by needs assessments carried out by various humanitarian agencies in the country. The Kenya Food Security Steering Group (KFSSG) conducted rapid mid-season food security assessments during May 2011. The livelihood clusters that were assessed included the northern and northwestern pastoral districts of Turkana, Moyale and Marsabit; the northeastern and eastern pastoral districts of Mandera, Wajir, Garissa, Isiolo, and Tana River; the southeastern marginal agricultural districts of Tharaka, Mbeere, Makueni, Mwingi, Kitui, and Meru North Districts and the Coastal marginal agricultural districts of Taita Taveta, Malindi, Kilifi and Kwale Districts.

Most households in these target areas are already under serious emergency food crisis due to; delayed and/or erratic onset of the March to May rains, significantly below normal rains, deteriorating household purchasing power, and in some areas, limited access to markets and to humanitarian assistance.

The performance of the March to May rains particularly in pastoral areas was very poor, with rainfall deficits of between 10 to 50 percent of normal. Consequently resulting; to acute scarcity of pasture, browse and water, increased livestock clustering at water points, rapid decline of livestock productivity and value, and worsening pastoral terms of trade.

In the south-eastern marginal cropping areas of Kenya, below normal yields were received- again, due to poor performance of the March to May rains, along with major price increases starting in June/July. As most households have become market dependent, food insecurity started to deteriorate from crisis to emergency levels beginning in July.

Water availability for agriculture, livestock and domestic has been on downward trend across all livelihood zones. Temporary surface water sources such as dams and pans had water (quarter full) or completely dried up in some areas. In areas that lack surface water points such as dams and pans, communities continues to depend on permanent water sources such as shallow wells and boreholes. Most of strategic dry season boreholes and shallow wells have broken down and require quick fix. Distance to and from watering points is increasing monthly is currently ranging between 5kms to 15kms in most areas.

Livestock migration from the North Eastern pastoral communities to the neighboring countries has been reported. There was increase in conflict incidences reported during the month of June 2011 in most of the cross border zones. Cases of Contagious Caprine Pleuro Pneumonia (CCPP) and Foot and Mouth disease (FMD) were reported in most pastoral zones. Cases of outbreak of livestock pests and diseases are also increasing.

In Turkana North, the area has not received sufficient rains for a long period and the pasture is now getting scanty forcing communities to migrate with their animals to 'dry season grazing areas'. Unfortunately, the remaining grazing areas are located along the international border which exposes the Turkana herders and their animals to potential armed cattle raiders - further complicating an already desperate situation.

Meanwhile, the only AKF member (LWF) who is responding in this area is faced with the challenge of convincing drought affected Turkana herders to avail their animals for vaccination before migrating to far grazing areas. Further to this, Livestock diseases are being reported more often across the Turkana region as the drought situation gets worse. Reported cases of livestock disease include: Camel cough that has killed camels – already families are reporting an average mortality rate of 15% with more camels presenting similar clinical signs. There appear to be an outbreak of this camel disease as similar cases are being reported across the Turkana County. Other reported livestock diseases include PPR and CCPP in Goats and sheep and CBPP in cattle

The prices of cereals and pulses have gone up by 130%. Communities have exhausted their stocks and are currently relying on market supplies. Two months ago, in most areas -one Kilo of maize was retailing at Ksh. 30 equivalent to (\$0.34) while beans were retailing at Ksh. 80 (\$0.9) per Kilo, current market prices for most cereals have suddenly shot up e.g. maize is now retaining at Kshs.70 (\$ 0.8) and beans at Kshs. 140 (\$ 1.5) per Kilo. The most frustrating for pastoralist communities is that, while the prices of livestock are going down every day, the cereals prizes are going up. This is putting such communities (pastoralists) in a very awkward position as they are now forced to sell more animals to buy same amount of cereals (compared to what same amount of food was costing a couple of months ago). The nutrition status of children (12-59 months old) is worsening and the percentage of those rated at risk of malnutrition (with Middle upper arm circumference- MUAC < 135mm) is increasing at alarming percentages. Global Acute Malnutrition levels exceed 30 per cent in northern districts.

Impact on human lives in the area of proposed response

The drought stricken regions are experiencing a crisis on crop and livestock productions, and an estimated 1,860,000 affected people are now coping through livestock migration, voluntary livestock off take sale, pooling resources to purchase water and pasture for livestock, dropping out of pastoralism to small holder farming, especially those living around permanent rivers such as River Tana and Ewaso Nyiro.

The arid and semi arid areas bear the greatest burden where the weather cycles are magnified from the normal fragile environmental and climatic conditions to extreme drought and famine which take a toll on human, livestock and wildlife populations. According to a report on January 7th 2011 by IRIN officials, the drought situation had moved from an alarm level to disaster level and millions of heads of livestock in Northern Kenya are dying because of drought. Unless urgent action is taken to mitigate water shortages the suffering of the people in the affected areas will continue to increase.

On May 30th 2011, Kenyan President Mwai Kibaki declared the ongoing drought a national disaster and mandated the Ministry of Special Programs to urgently distribute food and relief supplies to a targeted 1.7 million people per month in Northern and Eastern Kenya. The President asked the relevant government ministries and departments to facilitate the urgent import of maize to augment grain reserves, and allocated approximately \$7 million to the Ministry of Water and Irrigation and approximately \$12 million to the Ministry of Livestock Development for emergency drought response and pastoralist assistance interventions. On June 14, President Kibaki doubled monthly GoK relief allocations of maize, beans, and rice in response to the increasing impact of the disaster.

In Samburu, one mother narrated to a church Minister how she has gone for one week without food to feed her four children. The livestock in the region which the community rely on for livelihood are already dead and the few that are remaining have migrated to far away distances in search of pasture and water. The water shortage is also critical, all the shallow wells have dried up, people who have some

money are buying a 20 liter Jerican of water from Ksh. 50 to 100(USD 0.4- 1.2) while those with no income are going for two to three days without water.

Because of the prevailing drought situation, communities in many areas where AKF members are responding have their children dropping from school and spending long days searching for water, while others are being forced to accompany parents in such of paid labor to supplement the family income. In some areas, AKF members support will include food for work especially where communities have some strength and have requested to be provided with food and in return - work in their farms or even gather locally available construction materials to put up communal water collection facilities, (nevertheless no one deserving food aid will be turned back because of not participating in a labor for food programme). Where this will be applicable, it will be done through a food voucher for work system. The food voucher system is envisaged will provide paid labor (food for work) within the reach of most affected community members and stop the long trekking in search for paid labor in urban areas located long distances from home. Thus parents will then concentrate on their farms without necessarily having to do waged labour away from home and give children an opportunity to resume school.

The impact of the drought is manifested in the skyrocketing food prices, death of large numbers of livestock, and a massive increase in the number of new arrivals in Dadaab refugee camp on the Kenya Somalia border. The successive seasons of significantly below average rainfall and the subsequent drought have led to the following:

- Deepening food insecurity in pastoral areas and urban poor settings
- Global Acute Malnutrition levels exceed 30 per cent in northern districts
- Unprecedented numbers of refugees flee to overcrowded Dadaab camps- overwhelming the already stretched resources
- Rising conflict accentuating food insecurity in northern districts
- Significant population unable to meet basic food needs; an estimated 3.2 million may need food aid in coming months;
- Some 385,000 children under five and 90,000 pregnant and lactating mothers require therapeutic feeding and general food distribution

Outbreak of diseases have been reported in various parts where AKF members are responding – for example in East Baringo , cases of malaria, diarrhoea and cholera have been reported especially among children under five, the elderly and pregnant and lactating mothers due to nutritional deficiencies and poor sanitation. There are inadequate drugs and personnel at the few existing rural health facilities across the affected regions.

Description of the damages in the area of proposed response

The drought in Kenya and particularly in areas targeted by AKF members in this appeal has depleted livestock and other food resources which has left community members in desperate need of external assistance for relief food aid.

It is evident that the current drought has hit every sector in the community including learning in schools as parents are forced to withdrawal pupils/students from schools to supply labor and trek for long distances in search of water and food for their livestock. This is going to have serious long term education standards in the affected areas. Also, a lot of pressure has increased on the few water points leading to frequent violent conflicts in ensuing scrambles for the scarce water resources. Water has become scarce during this period and people are spending most of their time in search for water rather than in other beneficial economic activities hence- reversing the normal development activities in the community.

Women are the most affected as there is an increased burden in taking care of families. Women and children are spending long hours mining water from dry seasonal river beds for drinking or otherwise forced to walk with their livestock long distances to the next reliable water point (with distances varying between 6Km in Moyale to 20 KM in Madera and other water deficit regions where AKF members are working). This walking results to heavy energy loses and emaciation of both human and livestock. As a short term coping measure, the men are traveling to local urban centers to seek casual employment hoping in return, the luck ones will be able to support the family food needs.

Security situation in the area of proposed response

While security is good in most areas where AKF members are responding, the security situation in Northern parts of the country especially in Northern Turkana, Moyale ,Mosarbit ,Isiolo West Pokot and East Baringo is un-predictable and this has been escalated by the current drought as communities arm themselves to guard their animals as they migrate (together with their livestock) in search for pasture and water in areas that are prone to resource based violent conflicts .

Again, the communication infrastructure in most of the arid and semi arid areas is dire and this poses a serious challenge in the delivery of aid and overall implementation of the response activities. In the Northern and North Eastern regions, the roads are poor; some areas are inaccessible while other areas have no access to telephone communication network. In North Eastern province, there are high incidents of banditry due to the activities of Al Shabaab in Somalia. Similar insecurity cases were reported in East Baringo and along the Kenya Uganda/ South Sudan/Ethiopia border lines.

V. TARGETED BENEFICIARIES

The following table provides a geographical coverage and numbers of targeted beneficiaries by AKF RLAs and their respective IPs

ACT REQUESTING AGENCY	AKF IMPLEMENTING AGENCIES AND PARTNER	TARGET AREA	TARGETED BENEFICIARIES (HOUSEHOLDS)
ACK	ACK CCS in Nakuru, Mt Kenya, Ukamba and Kajiado	Ukamba CCS - Kisasi, Nzambani, Ngalange, Syekulu, Katithi and Kathonzweni Locations Mt. Kenya CCS - Tingithi, Mwiyumililye, Lamuria Locations Nakuru CCS - IDP camps Mahimahiu, Samburu, East pokot Locations Kajiado –Turusei, Kisongo, Mbirikani, Kekonyoke Locations	11375
LWF	LWF /DWS	Turkana North- Kakuma, Oropoi, Lokichongio and Nanam Divisions	4,000
	ELCK	Samburu, Kjiado, Marsabit, Taveta, Kitui, Tharaka and Narok and West Pokot	3500
	KELC	Tana River, Kajiado, Makueni, Taita Taveta, Kilifi and Kwale counties	10,000
NCKK	PCEA	Mutha, Kitui south, Laikipia	2000
	Respective NCKK Regions	10 administrative districts namely, Turkana, West Pokot, Tharaka, Garissa, Embu/Mbeere, Kilifi, Kwale, Kitui south, Kajiado and Narok districts. Nyandarua districts	4000
	MCK	Tharaka, Wajir, Embu/Mbeere	2000
NCA	RACIDA	4 out of 18 divisions in the larger Mandera district namely: Malkamari, Rhamu, Rhamu Dimtu and Ashabito	2720
	FGCK	Central Baringo, North Baringo and East Pokot in the Great Rift Valley Province	2667
CWS	ACK –Kitui Diocese	Nzauni location, Migwani district	1000
	CRI	Kibwezi	3660
CRWRC	ACK	Mbeere	8400
	RCEA	South Turkana	3000
	NCA	Narok	2600

TOTAL No. Of Beneficiaries (Households)*	60,922
---	---------------

**An average household has 6 members*

The following are details of details of specific beneficiaries targeted by the responding agencies;

ACK – analysis of type of assistance and type of targeted beneficiaries

Proposed Assistance	Targeted beneficiaries (households)
Food aid	
Maize	2,500
Beans	2,500
Cooking oil – Adults	2,500
- Children	1,000
Unimix - Adults	1875
- Children	1000
Non food items	
Water tanks (5,000 litres each)	15
Water trucking	40 trips
Certified planting seeds	
Provision of animal feed to 3 milking goats	500
De worming and vaccination	500
Provision of drip kits	3 sets
Provision of small shoats	
Goats / sheep	140
Rabbits	150
Chicken	110
Recovery / rehabilitation	
Rehabilitation of sand dams	6 dams
Repairing bore hole	1
Establishment of cattle troughs	3
Rehabilitation of water pans	4
Extension of piped water	1 line
Establishment of tree nurseries	

LWF/DWS- analysis of targeted beneficiaries and specific locations

The area affected by the drought is the entire Turkana West district which includes Kakuma, Oropoi, Lokichoggio and Nanam.

Estimated No of Households affected

DIVISION	LOCATION	HOUSE HOLDS
Kakuma	Nakalale	1,020
	Pelekech	1,200
	Kakuma	5,500
	SUB- TOTALS	7,720
Oropoi	Kalobeyei	1,500
	Letea	2,500
	Loreng	700
	SUB- TOTALS	4,700

Lokichoggio	Lokichoggio	2,500
	Loteteleit	500
	Mogila	1,200
	Songot	500
	SUB- TOTALS	3,700
Nanam	Nanam	900
	Lorau	1,200
	SUB- TOTALS	2,100
	GRAND TOTALS	18,220

LWF /DWS – analysis of planned interventions (based on rapid field assessment)

Intervention	Who is doing it now	Comment
Livestock destocking-slaughter	GoK- Livestock production department, VSF-G	LWF plan to fill gaps in the GoK & VSF-G intervention. Purchase 5,000 shoats and 500 heads of cattle. If meat is of good quality it will be distributed to the community/
Provision of veterinary services	CAHWs, GoK- Veterinary services department and LWF	There is need to provide this by supporting the government officers and CAHWs. 50,000 shoats to be serviced.
Provision of water- Water trucking, new water point establishment and rehabilitation of water points Promotion of hygiene	LWF, Ministry of water and irrigation	<ul style="list-style-type: none"> • Water tankering to communities located far from water points for 5 months • Rehabilitation of 4 water points and 1 water pan • Drill one borehole and installed with Duba pump • Install 10 plastic water tanks in schools, • Construct 4 ferro cement tanks • Conduct a rapid 2 day WASH sensitization campaign in 6 areas
Provision of relief food	Oxfam	The need is there and LWF/DWS is still exploring the possibilities in cooperation with OXFAM and WFP.
Livestock branding	GoK Veterinary department, LOKADO and LWF	100,000 heads of cattle and 200,000 shoats. This is critical to reduce the loss due to cattle rustlers and theft, especially as drought bites and cattle and shoats are moved in to conflict areas.
Vaccination and de-worming	GoK, VACNADA and LWF	Cattle not vaccinated against CBPP. The target is 50,000 cattle and shoats.

LWF-Kenya Evangelical Lutheran Church (KELC) (target to be revised downwards to correspond to the budget)

KELC is targeting 10,000 households in 6 counties namely :-Kajiado, , Kilifi, Tana River, Makueni and Taita Taveta- mainly focusing the most vulnerable groups affected by the current drought such as women and children, physically challenged, PLWHA both in church and society. These beneficiaries will be targeted from the following areas:

- Kajiado County: township, Oliorum-Bissil, Namanga, Iliparua, Esukuta, Kesai, Mailitisa
- Kilifi county: Kilifi town, Tezo, Mujibu, Mkoreshoni
- Tana River county: Garsen, Kulesa, Maziwa, Tarasaa, Golbanti, Odai, Lazima, Sailoni, Dalu, Furaha, Gadeni, Witu and Wema
- Makueni County: Ivingoni, Nwii, Ngiluni, Makutano, Mangelete Mwanza, Mutyambua, Sultan Hamud, Wote, Muthitha.
- Taita Taveta County: Voi, Maungu, Mgeno, Kisimenyi, Ngambenyi, Taveta town and its environs
Kwale County: Lunga lunga, Mwena, Maledi, Vanga, Mpakani

NCKK- analysis and type of targeted beneficiaries

NCKK, MCK and PCEA will facilitate relief efforts to assist populations most affected, through food aid, supplementary feeding to the vulnerable sectors in society e.g. children (school feeding activities); provision of water through rehabilitation of and drilling of new boreholes, tankering, and de-worming of livestock; provision of farm inputs particularly seeds to farmers; and advocacy to the relevant authorities at all levels

Below is a table showing the areas that are affected, the estimated population and the number of people in need of food aid in those areas.

	Region	District	Specific Areas	No. of pple in need of Aid
(i)	Lower Eastern	Kajiado, Kitui	Mashuru, Ikutha, Mutha	14,123
(ii)	Coast Region	Kilifi and Kwale	Ganze, Rabai, Kaloleni	15,485
(iii)	Central Region	Embu/Mbeere, Laikipia, Nyandarua	Mukogondu, Ndia	16,775
(iv)	Nairobi Region	Garissa	Dadaab	14,000
(v)	Upper Eastern	Tharaka	Maragwa, Kathangacini	10,600
(vi)	North Rift	Turkana and West Pokot	Kaputir, Katilu and Kainuk, Nyangaita and Konyao	14,723
(vii)	South Rift	Narok	Musiro and Loita	14,565
Total				98,271

In view of the above NCKK will target about 20,000 people (about 4000 hhs) in need of food aid in the areas identified above. In addition, NCKK will segregate this information to isolate the most vulnerable groups and therefore target them with the food aid intervention. The table below shows the total target number for NCKK as well as the target number for each category of people in each of the identified areas. MCK and PCEA will each target 2000 house holds respectively.

- *The National Council of churches of Kenya – breakdown of targeted beneficiaries*

District	No. of People Requiring Food Aid	Number of People that NCKK will Target	Men	Wome n	Children (below 18 Yrs)	OVC	PW - HIV	IDPs	PWDs
Kajiado, Kitui	14,123	3,000	4,00	9,00	600	8,00	2,00	-	100
Kilifi and Kwale	15,485	2,000	4,00	5,00	4,00	3,00	300	-	100
Embu /	14,775	35,00	5,00	900	1,00	500	500	-	100

Mbeere									
Garissa	14,000	25,00	4,00	5,00	600	4,00	5,00		100
Tharaka	10,600	25,00	4,00	6,00	6,00	200	100	-	100
Turkana and West Pokot	14,723	40,000	500	1500	8,00	500	100	500	100
Narok	14,565	3,000	4,00	800	700	400	100	400	200
Total	98,271	20,000							

NCA- analysis of targeted beneficiaries and specific locations

NCA- Rural Agency for Community Development and Assistance (RACIDA) *Mandera District*

#	Location (s)	District	Population
1.	Takaba town	Takaba	11,670
2.	Didkuro	Takaba	3,700
3.	Duduble	Takaba	1,950
4.	Eymole	Banissa	2,340
5.	Choroqo	Banissa	2,300
6.	Hulow	Banissa	3,800
7.	Sarman	Rhamu	2,300
8.	Ogorwein	Rhamu	2,600
9.	Malkaruqa	Banissa	2,190
10.	Farjana	Banissa	560
11.	Garse	Rhamu	1,980
12.	Hawara	Rhamu	1,209
13.	Kubi	Rhamu	1,205
14.	Shangalla	Rhamu	1,820
15.	Jabi	Rhamu	980
16.	Burjohn	Rhamu	1,420
17.	Qodi	Rhamu	2,190
	Total		44,214

NCA- Full Gospel Churches of Kenya (FGCK)

The FGCK will be targeting an estimated 16,000 pastoralists (especially those who have dropped out of pastoralism life after losing all their animals from cattle raids in East Baringo). The FGCK beneficiaries are predominantly women, children and the elderly will directly benefit from these interventions. Further to this, children from particularly, those in schools which have not been covered under the government school feeding programme will also be targeted (to reduce household food needs pressure from drought affected parents).

CWS - analysis of targeted beneficiaries and specific locations

- Anglican Church of Kenya - Kitui Diocese

The Proposed drought mitigation program targets six communities in Nzauni division in Mwingi/Migwani district. Each of the six communities has in the past constructed water structure from earlier funding from CWS. The same communities will be targeted for the mitigation measures. The location has approximately 6500 households. About 1000 vulnerable households are targeted to benefit directly from this drought response initiative. Women and children are the most affected in the prevailing drought. Children headed households will be given priority. The ACK Kitui Diocese have

agreed with their communities to support food for activities are geared towards water conservation – as a drought migration measure in Mwingi/Migwani District.

- **Community Resource Initiative**

Analysis of the Global food needs for Kibwezi district

Kibwezi district Locations	Total Population	Population in need of relief	No. of Families affected=8 ppf	Maize need per family/month=40kgs	Beans needed per family/month=7kgs	Cooking oil needed per family/month=2.5lts
Masongaleni	36,600	29,280	3,660	146,400kgs	25,620kgs	9,150lts
Ngwata	18,000	14,400	1,800	72,000kgs	12,600kgs	4,500lts
Kinyambu	12,500	10,000	1,250	50,000kgs	8,750kgs	3,125lts
Utithi	16,000	12,800	1,600	64,000kgs	11,200kgs	4,000lts
Kathekani	17,000	13,600	1,700	68,000kgs	11,900kgs	4,250lts
Nzambani	14,000	11,200	1,400	56,000kgs	9,800kgs	3,500lts
Nthongoni	19,000	15,200	1,900	76,000kgs	13,300kgs	4,750lts
TOTAL food needed			13,310	532,400KGS	93,170KGS	33,275LTS

Analysis of the CRI targeted assistance and areas

Kibwezi district Locations	Total Population	Population in need of relief	No. of Families affected=8 ppf	Maize need per family/month=40kgs	Beans needed per family/month=7kgs	Cooking oil needed per family/month=2.5lts
Masongaleni	36,600	29,280	3,660	146,400kg	25,620kgs	9,150lts

Analysis of the targeted households in Kibwezi & Masongaleni

- Masongaleni location has the following sub locations:
- Masongaleni sub location Households No. 1,464.
- Masimbani sub location Households No. 915
- Ulilinzi Sub Location Households No. 732
- Kyanguli Sub location Households No. 549

Total population targeted 3660 Hhs

**Each household has an average of 6 persons*

CRWRC - analysis of targeted beneficiaries and specific locations

The following is a breakdown of the CRWRC ongoing and proposed interventions

Beneficiary Totals

District	Food Aid (households)	Water (l per month)	Livestock Support (heads)
Isiolo	1,000	600,000	8,000
Mbeere	1,000	600,000	8,000
Tharaka	1,000	600,000	8,000
Narok	1,300	780,000	10,400
Kajiado	1,300	780,000	10,400
Kilifi	2,400	1,200,000	16,000
Taita/Taveta	1,600	1,200,000	16,000
Laikipia	1,400	840,000	11,200
Turkana	2,200	1,320,000	17,600
West Pokot	800	480,000	6,400
TOTAL:	14,000	8,400,000	112,000

Criteria for the selection

The general criteria for the selection of beneficiaries targeted by AKF Appeal will be through an open and transparent beneficiary selection process and where possible - facilitated by the field staff of AKF IPs consultation with the target communities, local social organizations, local government administration and other recognized relevant community leaders in order to identify priority needs of the targeted beneficiaries. Nevertheless, individual AKF members will have detailed beneficiary selection procedures that will address area specific situations and community preferences

Within the proposed target communities in areas most affected by drought in Northern, Lower Eastern and upper Eastern Districts of the country, the most vulnerable sub groups have been particularly identified to include the severely malnourished children, mothers, the elderly and female headed households.

Each AKF IP will be required to put together a global community relief allocation committee in each targeted or allocated area/region in the country. This committee will work closely with grass root community committees responsible for both identification of beneficiaries and the actual distribution of the relief entitlements to the targeted beneficiaries during the crisis emergency relief support and post emergency relief interventions.

As resources are limited and the needs are enormous, there is always pressure from those who are not targeted. But this is a daily challenge that the field staff from IPs will be required to address.

It is important to note that AKF members will endeavour to ensure in their interventions there is deliberate protection of the most vulnerable community groups – especially malnourished children, orphans, the elderly, people with disabilities, women and child headed families etc. These groups will be protected and their relief entitlements advocated for by AKF implementing partners. Other specific check list for targeting beneficiaries will includes the following:

- Malnutrition levels among poorer households.
- Accesses to water considering long distances where people cannot reach water sources.
- High loss of livestock

- Higher malnutrition rate.
- Where AKF members and partners have strategic positioning and allowing other agencies take up other areas to avoid overlapping among government and NGO partners.

VI. PROPOSED EMERGENCY ASSISTANCE & IMPLEMENTATION

Goal

To relieve human suffering and reduce vulnerability of drought affected communities in Kenya through provision of immediate live saving basic needs and put in midterm and long term drought mitigation measures.

OBJECTIVES

1. To provide about 60,922 households affected by drought with relief food, water and other life supporting services to enable them to meet their basic needs for 5 months.
2. To undertake emergency livestock interventions e.g livestock de-worming, provision of fodder etc targeting pastoralists with the aim of providing targeted families with emergency safety nets and cushioning them from the adverse impact of the drought.
3. To provide targeted supplementary food (*with unimix / BP5*) to children under five years together with other indentified vulnerable groups from the drought affected communities.
4. To provide families affected by drought with appropriate early recovery opportunities (*e.g. restocking of herds, rehabilitation of low cost water structures, waters bore holes, drought resistant crops etc.*) which will enable them return to pre-drought conditions.
5. To provide farmers and pastoralists with drought management skills and diversification of livelihoods for enhanced drought resilience.
6. To create awareness and advocate on issues of concern regarding the plight of the affected persons and communities to the GOK and other stakeholders

Plans for Emergency crisis phase response – immediate basic needs

The drought situation in Kenya has deprived both pastoral and agro-pastoral communities of their livelihoods and left the most affected communities seeking for support from well wishers. The affected communities require immediate food and water, health and supplementary feeding support

EXPECTED OUTPUTS AND INDICATORS

FOOD

Output: Increased consumption of meals at the household level over the project period-CRWRC, CWS, ACK, NCK, NCA &LWF

AKF members have adopted two distribution strategies in delivering relief food to the affected families. Some members will buy, deliver and distribute relief food to the targeted beneficiaries while other will use food vouchers that will enable the targeted beneficiaries to secure food from the locals' food stores. The monthly food ration will be composed of 50kg of maize, 10kg of beans and 3 liters of cooking oil per household. AKF members and their IPs distributing food will be encouraged to carry out a quick baseline survey before the first distribution and compared with the results of the end of project survey conducted after the last distribution. Because the project is starting one month into the 'hunger gap' it is expected that meal consumption will be significantly reduced at the start of the project. While it is still too early to determine whether the short rains in October and November will be sufficient to yield any harvest in January, it is hoped that soon after the conclusion of the food distribution component of this appeal harvests will be realized.

While the ration size is enough to increase meal consumption during the Appeal period -it is possible that households will identify other end uses for the food, such as selling, sharing or even planting. The ACT external evaluation survey will also identify what percentage of food was used for each purpose so as to establish the impact of the food aid

Indicator:

- % of maize, % beans and % oil reported consumed by recipient HH
- Number of meals per day
- Ongoing discussions with WFP/ OXAFAM are concluded and the AKF member in Turkana North (LWF) is included in the LWF food distribution partnership arrangement.

Address Malnutrition levels among children and vulnerable groups

Output: Increased consumption of supplementary nutritious food for targeted < fives and other vulnerable family members for 5 months - CWS, ACK, NCKK, NCA

Indicator:

- Number of under fives reached
- % of reduced malnutrition levels among targeted under fives and other identified vulnerable groups.

Output: Increased maize, bean and oil availability at the household level for targeted HH for a period of five months- CRWRC, CWS, ACK, NCKK & NCA

The monthly distribution of a 50kg ration of maize, 10kg of beans and 3l oil will increase the availability of maize, beans and oil at the household level. The signature of receipt on the beneficiary register/cards will be used to indicate the increased availability of maize, beans and oil. A further confirmation question will be included in the EoP survey to verify beneficiaries received correct ration sizes for the correct period of time.

Indicator:

- Number of beneficiaries report receiving the correct ration size
- Types and quantities of commodities distributed per family.

Water Sanitation and Hygiene services (WASH)

Output: Improved availability and accessibility of safe water – LWF, NCA, CWS, CRWRC, ACK & NCKK

As the drought conditions worsen across the country the availability of water at the household level continues to deteriorate. Boreholes are drying up, water pans shrinking and even annual rivers like the Tana River, and River Turkwel are reaching low levels. As reliable sources water becomes scarce, the distances women are traveling forth and back to collect water for domestic use is increasing and limiting the time women have for other household activities. Additionally, the quality of the water is deteriorating as humans and animals are now sharing the same source of water in many communities where AKF members are responding. By providing water in communities where the nearest water point is more than 5km away these- AKF members aims to lessen the household water burden. In most cases, even where water is available, AKF members will provide water purification tablets to reduce the number of cases of water borne diseases in the community.

Indicators

- % of HHs reporting reduced walking distance to water sources
- % of quality water sources that are operational (human consumption)
- Number of boreholes drilled or repaired
- Number of people supplied with water per day through water trucking or from direct water supply
- Number of water points that remain operational during the peak months
- Number of new water points established

Output: Improved water and sanitation practices- ACK, CRWRC, CWS, NCA, LWF & NCKK

As water becomes increasingly scarce there has been a spike in sanitation related diseases. These AKF members will provide water to the beneficiary households, and where possible broaden community infrastructure, so that both household and sanitation needs are enhanced. As all the areas of intervention are in arid or semi-arid areas it is estimated that 15- 20 liters will be necessary per household per day. While this is well below SPHERE standards it would restore households to pre-drought household water levels. With this provision of household water, it is expected that sanitation related diseases will be reduced to 2010 rates.

Indicators

- % of HHs reporting reduction of sanitation related diseases

Livestock improvement & destocking**Output: Improved availability and accessibility of pasture-CRWRC, ACK, LWF, NCA, NCKK**

While AKF members in this appeal are continuing to monitor the water levels for livestock, most of the larger herds have migrated to areas without acute water scarcity. A first priority, therefore, will be the provision of the fodder and water for milk producing animals and small household livestock that have been left behind. By providing fodder the total loss of the household's animals will be mitigated and their recovery after the drought will be faster. In addition, the milk producing animals will increase the food variety at the household level.

Indicator

- % of HHs reporting reduced deaths of livestock as a result of pasture scarcity
- Increase in milk production
- Number of water trucking trips per month
- Number of HHs of reached with under livestock water trucking intervention

Output: Improved availability of livestock health, enhancement and livestock branding services to control cattle thefts - CRWRC, NCA, ACK, LWF

As livestock wasting increases, so does the incidence of livestock diseases. Already in Uganda there was a widespread outbreak of foot and mouth disease. Livestock diseases that are causing further body deterioration are also on the increase. AKF members responding to livestock needs will therefore provide vaccination and de-worming medicine for milk producing animals and small household livestock. Reports of cattle raids are expected to increase as herders relocate remaining animals to unsafe grazing areas.

Indicators:

- % of HHs reporting reduced livestock disease incidences
- Number of livestock vaccinated
- Number of livestock de-wormed
- Number of animals branded
- Reduced incidences of cattle raids (thefts).

Output: Compliment GOK de-stocking efforts to safe herders from total loss of their livestock - LWF, NCA & ACK

Indicators:

- Number of livestock purchased for de-stocking
- Number of HHs benefited from the de-stocking programme

Output: Feasibility and capacity of Katilu Irrigation Scheme determined- CRWRC

As a first step in a long-term food security initiative CRWRC will complete a feasibility study of the Katilu irrigation scheme. While the scheme has supported large scale agriculture in the past- a lot has changed in the surrounding environment and a detailed assessment is necessary before any long-term work begins. This scheme if rehabilitated is envisaged will address the food security of large number of people living in Turkana South.

Indicator:

- Feasibility study completed

Conflict management and resolution initiatives

Output: Increased dialogue around points of community tension –CRWRC, NCA, NCK, ACK

In some areas where some AKF members are responding e.g. Turkana, Tana River, Mandera etc are particularly prone to violent conflicts over resources and tribal or clan lines. The drought is causing additional tension as resources become increasingly scarce. Through a process of promoting dialogue through facilitation AKF members working in such areas will create some conflict resolution measures to enhance peaceful co-existence among tribes and clans from affected communities.

Indicators:

- Number of joint dialogue meetings between conflicted groups
- Number of community action plans completed
- Number of community action plans being implemented

Conflict Mitigation Efforts

Output: Decreased number of deaths and loss of assets due to conflict-CRWRC, NCA, ACK, NCK

An expected outcome of the increased dialogue on points of conflict will be the peaceful resolution of such conflicts. As a result lives can be saved and asset loss mitigated against.

Indicators:

- Reduced number of lives lost and value of assets lost

Advocacy issues

Output: Increased Government responsibility on long term food security for drought prone communities and enhanced accountability in all humanitarian efforts– NCKK

Indicators:

- Number of advocacy issues identified and analyzed
- Number of consultative meetings held on advocacy awareness raising
- Number of engagement meetings held with relevant authorities at both local and national level

Drought Recovery and Rehabilitation interventions (DRR)

Output: Quick recovery from drought effects and enhanced drought resilience among targeted communities – NCKK, CWS, LWF, NCA & ACK

Indicators

- Number of water points/sources rehabilitated or expanded to cope with future drought
- Number of boreholes drilled or repaired
- Number of families that have received farm inputs and have planted
- Number of community members who have been trained in DRR and are practicing drought risk reduction measures using skills from capacity development efforts of AKF members
- Number of animals re-stocked and no of beneficiaries
- Number of livestock served by complimenting GOK/CAHWs Veterinary services
- Number and type of drought mitigation measures undertaken by AKF IMs and IPs

ACTIVITIES**General Activities: All RLAs and their IMs/IPs**

- Hire or re-deploy Project Staff by AKF RLAs and IMs/IPs
- Identify and appoint strategic point Persons in each responding agency
- Establish community committees and select distribution assistants.
- Identify beneficiaries based on criteria explained/discussed in this appeal
- Coordinate project activities with respective District steering groups , other stakeholders and GOK district officials from relevant Ministries
- carry out rapid baseline surveys to capture changing scenarios on the ground
- Adaption / establish of systems for delivering of relief aid (e.g. relevant financial reporting format and monthly narrative reporting templates)
- Step up monthly verification of community relief committee reports/data
- Step up attendance of relevant Coordination Meetings both at National and field levels.
- continuous monitoring of AKF response activities
- End of emergency food component survey by participating AKF members
- Assess future needs in the project area
- Meet the reporting schedules of ACT Alliance CO stipulated in this appeal.

Activities: EMERGENCY AND CRISIS PHASE**Food Activities:- All RLAs and their IMs/IPs**

- IPs and IMs in consultation with RLAs tender and procure relief food for respective targeted areas
- Identify warehouses in respective regions/areas
- Organize secondary transportation systems to the final Distribution points
- Train field staff, coordinators, relief committees and food monitors on management and targeting of food aid.
- Update the beneficiary roaster/lists of respective IMs and IPs.
- Provide supplementary feeding to under 5 years and other vulnerable groups in consultation with nutrition specialized agencies
- Monthly food distributions
- Identify locations for FFW activities and begin FFW activities.

Water Activities:- NCA,LWF,NCCK,ACK,CRWRC& CWS

- Carry out strategic needs assessment
- Protect strategic wells and springs to increase efficiency
- Plan how water facilities will be used and managed
- Plan for opening of contingency boreholes where applicable.
- Maintain and rehabilitate boreholes
- Plan how domestic water will be safeguarded in interventions aimed at water livestock
- Arrange water trucking or the provision of water for those communities with no access to water or engage water trucking contractors (where this is applicable)
- In special cases, procure and provide temporary water holding tanks for public use.
- Consider fuel subsidies for boreholes where operation has been interrupted by fuel shortages

Livestock Activities:- NCA,LWF,ACK& CRWRC

- Provide emergency feed/folder/pellets and water, especially for milk animals and other household animals
- support livestock de-stocking programme
- Link communities in destocking and off-take programmes – fill need, if needed

Activities: POST-CRISIS**Recovery and rehabilitation activities**

Community early recovery activities will be very essential to mitigate the effects of eminent droughts in the near future. The AKF members will also support the following recovery initiatives:

Food security - NCA, NCCK, ACK, CRWRC& CWS

- Provide communities with drought tolerant planting seeds
- Provide farmers with drip irrigation kits
- Identify consultants for Katilu Irrigation Scheme feasibility study (CRWRC)

Water Activities: NCA, LWF, NCCK, ACK, CRWRC& CWS

- Rehabilitate existing water pans in time for short-rains in October/November 2011
- Drilling of new Boreholes and rehabilitation of broken ones
- Train communities on management of water points

Livestock Activities: NCA, LWF, NCKK, ACK, CRWRC

- Restocking in areas where herds are completely destroyed
- support livestock vaccination and treatment
- Carry out livestock branding in specific areas especially in Turkana
- provision of livestock veterinary services to compliment both GOK and other stakeholders efforts
- Provide pastoralists with appropriate seeds for pasture development

Disaster Risk Reduction Activities: NCA, LWF, NCKK, ACK, CRWRC & CWS

- Carryout DRR orientation to AKF IMs and IPs
- Conduct DRR capacity development trainings focusing on drought risk reduction measures
- Identify community leaders and key decision makers for conflict mitigation training
- Conduct trainings in advocacy skills for community and church leaders
- Facilitate community dialogues

Project implementation methodology

The AKF project interventions will be composed of a mixture of working through IPs or working directly with communities especially in areas where the RLA has no IP. For example NCKK, ACK and LWF will be doubling as both RLAs and IPs. Further to this, the RLAs in this appeal have also resolved on key methodologies of delivering food aid and water especially during the emergency crisis stage.

In some areas RLAs have opted to use food and water vouchers respectively to deliver these services. This methodology will support the most vulnerable households from the drought stricken communities. The identification of the beneficiaries will be the responsibility of the community members using their own agreed criteria (culturally acceptable) but as much as practically possible -informed by the criteria described earlier in this appeal. The selected beneficiaries will receive monthly food rations from the local traders (selected by the community members) .

The beneficiaries will sign the vouchers against the amount and type of food supplied during the month (before the traders) thereafter present the vouchers to respective AKF IP for re-deeming. Through this arrangement, local traders will be able to have good business standing with wholesale suppliers and re-activate local economy.

The water vouchers will be used in East Baringo and Mandera District where 2 NCA Implementing Partners (RACIDA & FGCK) will be operational. Different trucks of varying capacities will be contracted to draw water from the nearest reliable water sources and delivered through already existing community water resource users' associations and committees and targeted families will draw water from the contracted water trucking companies using their daily designated water supply vouchers and as the food vouchers, the water suppliers will present the used water vouchers to NCA IPs for payment.

On advocacy issues, AKF will depend on the national legitimacy of the NCKK and churches participating in this appeal (MCK, PCEA, RCEA, ELCK and KELC), who are also members of NCKK. They will identify the advocacy issues and initiate advocacy efforts through the NCKK General Secretary's office and respective heads of the participating churches. To engage the GOK authorities on critical advocacy issues

around recurring food insecurity in the country and official corruption in government. The advocacy work will be coordinated by the NCKK regional offices, using the local structures of the respective participating churches.

All the AKF members and IPs in this appeal will also be alive to various assessments done by churches, the Kenya Food Security Steering Group and other organizations. They will identify gaps in the course of implementation. They will also use available assessments that are done weekly or monthly by the Kenya Food Security Steering Group, World Food Program and other organizations. Identified gaps will be consolidated by the regional offices and forwarded to the head offices.

All ACT Alliance members participating in this joint appeal as well as their implementing partners will be required to adhere to the SPHERE standards, humanitarian principles and the Red Cross Code of Conduct during their response activities

Inputs for project implementation

The Individual RLAs will be responsible for the day to day coordination of their component in this appeal in conjunction with their respective local implementing partners. The logistical operations remain the responsibility of individual RLA and IPs. This includes transport logistics logistical, procurement and staff management. However, whenever feasible and where this makes savings for the AKF programme operations; e.g. procurement and transport, joint logistical operations will be encouraged. This is needed especially in the case of large procurements (where the members) will benefit from bulk discounts, batch transportation and closer coordination of supplies.

The RLAs and their IPs will require staff to implement the various activities in this appeal. Most of these staff will be field based and supported by HQ based staff from Nairobi. The following is therefore a list of staff requirements for this appeal:

Direct response Staff

- Project Field Officers
- Food Monitors
- Nutritionists
- Enumerators
- Community Animal Health Workers(CAHWS)
- WASH technicians
- Veterinary Doctors – short term services
- Drivers
- The Clergy
- Peace Officers
- Community Development Assistants
- DRR experts
- Emergency Officers
- Contribution to Project/Programme Manager
- Contribution to Accountants/Finance Managers
- Contribution to Logistics Officers

Other requirements will be 4x4 vehicles especially for those agencies who will be working in the Northern corridor. Heavy trucks will be used for transportation of relief materials to respective areas.

Planning assumptions, constraints and prioritization

	Risk	Analysis –likelihood and consequences
1	Threats of possible armed elements enter the country with current influx of refugees from Somalia	Entry of armed refugees from Somalia in Kenya might increase insecurity as refugees are forced to sell their arms to buy food and by extension increase the number of small arms among pastoral communities in Northern Kenya where AKF members are working -the main assumption is that security situation will not deteriorate further in the project locations.
2	The drought conditions escalates further and more people fall into the food aid bracket	The next rains in Kenya are expected short rains in October/November 2012 .If these rains don't come through, or fails as the April long rains, then the current drought crisis will escalate with serious humanitarian consequences . This might force the RLA to revise their appeal upward as more communities outside the targeted areas in this appeal will fall into serious food needs and require assistance as well.
3.	Limited funding or/and receipt of funding in small bits	This Appeal is running for one year and its funding level will be a determining factor for the successful implementation of the respective activities. Moreover, the AKF members are alive on the likelihood of piece meal funding cash flows, affecting the implementation of the planned project activities. Activities will be implemented on priority basis to match the funds available.
4.	Donors focus on Somalia refugees (because of the current media attention) while the drought situation in Kenya is given media blackout.	The Kenya appeal runs the risk of getting overshadowed by the current media attention on Somali refugees crossing into the country. If this happens, it may create a back lash from host communities who feel they are equally exposed to almost similar drought situation prevailing in Somalia, besides the refugees are destroying the environment of the host community with serious long term negative implications.

Implementation Timetable

This is a 12 months project and each RLA and respective IPs will be responsible for adhering to the agreed 12 months implementation timeline. While it would have been prudent to develop a consolidated activity implementation timeline, this could be frustrated by different funding cash flow intervals to individual agencies from the alliance Network.

Transition or Exit strategies

One of the strongest points of AKF members and their partners in this Joint appeal is that – besides the current drought, they have been working with same communities through different development activities and the reality is that; the relief interventions in this appeal are meant to cushion the communities during this difficult period which by any standard they would require external support to enable them cross the current hunger gap.

Nevertheless, the implementation of this appeal will be the responsibility of the individual AKF RLAs and each agency will therefore be responsible for their exit mechanism as well.

But general exist strategies for majority of the AKF RLAs and their IPs are tailored around the traditional livelihood systems of respective communities. All the RLAs have factored in their specific components in this appeal some recovery and rehabilitation interventions during the post crisis stages that will cushion families as they prepare to phase out from the relief support. These interventions include;

- Supporting re-stocking of shoats and draught animals– this will provide the most vulnerable pastoralists who have lost all their livestock during the drought with seed animals to start rebuilding their stocks.

- Provide short seasonal drought resistant crop seeds (e.g. sorghum, soya beans, green grams beans, maize,) to agro-pastoral farmers – this will give targeted families head start if the next seasonal rains comes in time and provide such families with an opportunity to grow their own food to bridge the communities to the next level.
- Support rehabilitation of water supplies and re-seeding of pasture in areas that literally lost all the available grass over the years of recurring droughts and un-checked overstocking eroding the soil cover.

As stated earlier, It is important to take note that most AKF members in this appeal are already involved in development activities with communities in their respective target areas and once the relief phase over- these agencies will revert back to regular development activities with their partners communities

Cross Cutting Issues

There are a number of important issues which cut across all communities that the AKF members and their and their IPs will be working with. The AKF RLAs in this appeal and IPs will however ensure their response activities will also engage communities on some of these issues especially those touching around gender and beneficiary accountability. Thus the following cross cutting issues will be mainstreamed in all AKF RLAs/IPs planned activities were applicable.

Gender

For the purpose of this appeal and based on the existing gender disparity in rural communities in Kenya, the RLAs members and IPs will make use of internally available information to reduce the negative impact of the gender based entitlement cultural beliefs of local communities to ensure improved mainstreaming of gender concerns (in humanitarian work) without necessarily being misunderstood (by the local communities).

Aspects of gender mainstreaming will be considered especially in the food distribution system by ensuring there is significant participation of all gender groups in the allocation of food to ensure gender balance in all decision making n committees. The relief food will be distributed mainly to women as heads of households. ALL participating agencies will be encouraged to take into consideration the protection and special needs of vulnerable groups especially women, children, the sick, household members living with terminal diseases, the elderly etc and ensure deliberate targeting (for these groups) in the response activities. All WASH activities targeting behavior change and improving access either to water and sanitation will provide opportunity for reduction in water borne diseases which in reality easily affects young children which is a concern to many mothers during crisis like this.

Accountability to Beneficiary

Majority of the 6 AKF members in this Joint ACT Appeal are conversant with the Humanitarian Accountability Partnership (HAP). However, generally the capacity within the AKF membership and implementing partners on HAP remains low. The HAP compliant AKF members will be called upon to provide in house training on HAP to the benefit of all the AKF members and their IPs or IMs.

Advocacy

One of the reasons why so many Kenyans have been pushed to the edge (to the point of starving to death) is because of the deliberate absence of proper Government disaster management structures in the country. Another serious problem is the high levels of corruption within the key Government ministries that have perpetuated a culture of stealing public resources that are meant to provide communities with drought resilience food security and water programmes. In this Appeal, and on behalf of the AKF, NCKK is carrying a budget for up scaling of advocacy and protection issues with relevant Government Authorities concerning these issues. The NCKK efforts will be augmented by the churches enjoined in this Appeal.

VII. ADMINISTRATION AND FINANCE

As stated at the beginning, this appeal will NOT have a single lead agency and therefore each of the 6 AKF requesting members will be responsible for the administration and management of their own budgets together with their respective IPs and consequently directly responsible for reporting to the ACT Secretariat on behalf and consultation with their IPs. Thus, funds generated from this appeal will be disbursed directly from the ACT Alliance Geneva Office to the head offices or field offices of 6 requesting AKF members/ organizations in Nairobi.

Again individual AKF members will also be responsible for MOU Agreements with their respective implementing partners (where this is applicable), however in order to underline the spirit of the joint Appeal among members, the AKF members will adapt one MOU format for all their implementing partners. This means that all the 6 AKF members enjoined in this Appeal will effectively be in charge of their budgets, take charge of and organize for the auditing of their finances as well as meeting all the relevant ACT Alliance reporting procedures.

Individual AKF Requesting agencies in this Appeal will ensure that financial procedures are adhered to by the IPs as outlined in the MOU/cooperation agreement framework that will be adapted by AKF members for funds received from ACT secretariat or directly transferred to AKF requesting agencies on behalf of (for onward forwarding) the respective IPs (where this is the case). It is mandatory that both RLAs and their IPs will be required to maintain an independent account for funds designated for this KEN-111 appeal

VIII. MONITORING, REPORTING & EVALUATIONS

This appeal is a joint effort of 14 AKF agencies currently chaired by the Anglican Church of Kenya (on a rotational basis). As stated elsewhere in this Appeal proposal, the AKF brings together 14 ecumenical groups and churches working in Kenya.

However, for the purposes of this Appeal the AKF members will conduct at least one joint monitoring mission during the life of the programme (12 months). Nevertheless, the AKF monthly meetings will provide the primary monitoring basis of providing updates of different RLA and IP intervention activities in their respective areas, while the day to day monitoring will be executed by IPs or by the RLAs (in cases where the a RLA is directly implementing their own project activities).

The individual AKF members are committed to the monitoring and reviewing the implementation progress of their activities besides, accessing and analyzing the security and humanitarian situation in their areas of operation and consequently share information with other AKF members before jointly sharing with other stakeholders and ACT Geneva secretariat as a forum.

Overly, this joint Appeal is expected to reach the thresh hold that will require an ACT secretariat external evaluation process which will be done during the implementation of project activities and a separate budget for this exercise is factored in this Appeal.

ACT Appeals with at total target of 5 million USD or above are subject to an external evaluation. However, since the ACT Secretariat has issued three appeals to respond to the drought at the Horn of Africa, a decision was made to commission an external evaluation which would cover the Appeals for Somalia, Kenya, and Ethiopia. Each Appeal will provide some support to the comprehensive evaluation with a total budget of 75,000 USD. The contribution from the Kenya appeal is 15,000 USD. A detailed budget for the external evaluation will be developed and can be sent upon request.

IX. COORDINATION

The AKF response and level of engagement is informed by the existing humanitarian coordination structures and efforts in the country. At the National level, AKF is represented in both UNOCHA and Kenya Food Security Steering Group (KFSSG) coordination platforms, while at the district level the AKF implementing partners are members of the respective district steering groups that bring on board agencies involved in humanitarian work within the respective districts. AKF members operating in respective districts will be representing the forum in these meetings. Through the decision of the AKF, an AKF member in 20 of the most affected district has been nominated as the AKF Focal Points in the respective districts for purposes of internal (AKF) coordination and other humanitarian actors within the respective areas. Further to this, in cases where there is more than one AKF member in a particular area, members have been encouraged to engage one another and agree on who will provide a focal role during the life of this appeal.

Again the AKF remains the central platform for all respective coordination feedbacks during the implementation of this joint appeal.

X. BUDGETS

ACK DOSS

	Type	No.	Unit Cost	Budget	Budget
	Unit	Units	local currency	local currency	USD
EXPENDITURE					
DIRECT ASSISTANCE					
Crisis phase					
Food relief assistance					
Maize	90kg bags	75000	70	5,250,000	58,989
Beans / Pulses	90 kg bags	100000	90	9,000,000	101,124
Cooking oil - Adults	litres	100000	130	13,000,000	146,067
- Children	litres	50	130	6,500	73
Unimix - Adults	2.5 kg	20937.5	500	10,468,750	117,626
- Children	25 kg bags	1500	5,000	7,500,000	84,270
Sub total food relief				45,225,250	508,149
Non Food Items					
Training of relief committees	meetings	26	20,000	520,000	5,843
Identification of beneficiaries	meeting	13	20,000	260,000	2,921
Establishment of beneficiary lists/ other documentations	meeting	13	10,000	130,000	1,461
Purchase of water tanks	5,000 litres	15	60,000	900,000	10,112
Establishment of water tank bases and guttering	bags, kg	15	15,000	225,000	2,528

Provision of animal feed 3 milking goats /H/H 500 goats	bales	2500	2,000	5,000,000	56,180
Deforming and vaccination of the 500 goats	vaccines	1000	100	100,000	1,124
Sub total non food items				7,135,000	80,169
Rehabilitation / Recovery					
Agriculture					
Training and education on appropriate farming methods	meetings	13	15,000	195,000	2,191
Purchase and distribution of drought tolerant seeds				-	-
cow peas and green grams - UCCS,	kg	200	800	160,000	1,798
Drought tolerant beans/ maize seeds Kajiado	kg	200	1,000	200,000	2,247
vegetable seeds, carrots, kales, cabbage - Nakuru		40	2,000	80,000	899
Cow peas and green gramsMt. Kenya	Kg	400	800	320,000	3,596
Training and establishment of drip irrigation - Nakuru	kits	10	20,000	200,000	2,247
Training and establishment of low costgreen houses		3	200,000	600,000	6,742
Sub total Agriculture				1,755,000	19,719
Livestock					
Training on animal husbandry	meetings	13	20,000	260,000	2,921
Provision of improved animal breads				-	-
shoats - goats / sheep - UCCS,Nakuru, Kajiado	number	150	5,000	750,000	8,427
chicken and rabbits - Mt. Kenya, Nakuru	numbers	300	6,000	1,800,000	20,225
Deworming and vaccination before distribution		450	50	22,500	253
Sub total Livestock				2,832,500	31,826
Water and sanitation					
Training of water user association	meetings	10	20,000	200,000	2,247
Rehabilitation of borehole -complete drilling, purchase of genesets		1	2,000,000	2,000,000	22,472
Construction of cattle	numbers	3	50,000	150,000	1,685

troughs					
Rehabilitation of 6 subsurface dams - UCCS	dams	6	800,000	4,800,000	53,933
Digging shallow wells	wells	3	150,000	450,000	5,056
Rehabilitation of 4 water pans - Mt. Kenya	pans	4	700,000	2,800,000	31,461
Establishment of 8 tree nurseries		8	50,000	400,000	4,494
Sub total water and sanitation				10,800,000	121,348
Direct Programme Related Costs					
1 Project coordinator - DOSS - 80%	months	13	100,000	1,040,000	11,685
1 DOSS Emergency /DMP project officer - 50%	months	13	125,000	812,500	
4 Project assistants RCCS - 30%	months	48	40,000	576,000	6,472
1 DOSS Director - 5%	months	12	130,000	468,000	5,258
4 RCCS directors allowances - 10%	months	48	120,000	576,000	6,472
13 volunteer allowances	months	78	20,000	156,000	1,753
1 Project accountants - DOSS - 10%	months	12	60,000	72,000	809
4 project accountants - RCCS - 20%	months	48	50,000	480,000	5,393
1 Office administrator - DOSS -5%	months	13	35,000	22,750	256
4 office administrators - RCCS - 10%	months	12	30,000	36,000	404
sub total project related costs				4,239,250	47,632
TOTAL DIRECT ASSISTANCE				71,987,000	808,843
TRANSPORT, WAREHOUSING & HANDLING					
Transport (of food aid materials)					
Hire/ Rental of Vehicles	lumpsum	5	900,000	4,500,000	50,562
Fuel	Lump sum	5	180,000	900,000	10,112
Warehousing ((Kajiado/UCCS)				-	
Rental of warehouse		6	20,000	120,000	1,348
Wages for Security/ Guards		6	80,000	480,000	5,393
Handling				-	
Wages for labourers		5	20,000	100,000	1,124
Wages for Drivers		5	24,000	120,000	1,348
TOTAL TRANSPORT, WAREHOUSING & HANDLING				6,220,000	69,888

CAPITAL ASSETS (over US\$500)					
Computers and accessories		1	150,000	150,000	1,685
Portable printers		1	45,000	45,000	506
Communications equipment				-	-
video camera		1	250,000	250,000	2,809
satellite phones		2	150,000	300,000	3,371
					-
Sub total capital assets				745,000	8,371
INDIRECT COSTS: PERSONNEL, ADMINISTRATION, OPERATIONS & SUPPORT					
Staff benefits					
Per Diems allowances during project visits	months	6	120,000	720,000	8,090
Substance during field visits	months	6	96,000	576,000	6,472
Office Operations					
Office rent - 2,000/= each		12	10,000	120,000	1,348
Office Utilities 2,000/= each		12	10,000	120,000	1,348
Office stationery - 3,000 each		12	15,000	180,000	2,022
Communications					
Telephone and fax (DOSS , 4 RCCS at 5,000/=)		13	25,000	325,000	3,652
Support to Communication and documentation staff		3	20,000	60,000	674
Project monitoring and evaluation		8	50,000	400,000	4,494
Project activities documentation		4	30,000	120,000	1,348
production of DVD		1	100,000	100,000	1,124
TOTAL PERSONNEL, ADMIN. & OPERATIONAL SUPPORT				2,721,000	30,573
AUDIT					
Audit of ACT appeal				500,000	5,618
TOTAL AUDIT				500,000	5,618
TOTAL Project Budget				82,173,000	923,292
International Coordination Fee (3%)				2,465,190	27,699

TOTAL APPEAL PROJECT BUDGET REQUESTED BY ACK			84,638,190	950,991	
EXCHANGE RATE: local currency to 1 USD: 89					

CHRISTIAN REFORMED WORLD RELIEF COMMITTEE (CRWRC- KENYA)

	Type	No.	Unit Cost	Budget	Budget
	Unit	Units	Kenya shillings	Kenya Shillings	USD
EXPENDITURE					
DIRECT ASSISTANCE					
CRISIS PHASE					
OUT COME 1: FOOD AID					
Maize	MT	3,500	47,000	164,500,000	1,827,778
Beans	MT	700	70,000	49,000,000	544,444
Cooking Oil	Litres	210,000	202	42,420,000	471,333
Salt	MT	35	25,000	875,000	9,722
Supplementary Feeding- Unimix	MT	200	78,000	15,600,000	173,333
Sub Total				272,395,000	3,026,611
TRANSPORT, SHIPPING & HANDLING					
<u>Transport (of relief materials)</u>					
Hire/ Rental of Vehicles	Distribution Centers	28	150000	4,200,000	46,667
<u>Warehousing</u>					
Rental of warehouse	Warehouse	140	20,000.0	2,800,000	31,111
Wages for Security/ Guards	People	140	7,000.0	980,000	10,889
<u>Handling</u>					
Loading and Offloading	Bags	84,000	10.0	840,000	9,333
Quality Inspection	Per MT	4,435	450.0	1,995,750	22,175
Distribution Assistants	Per Distribution Centre	140	1,000.0	140,000	1,556
Beneficiary Cards	Per Beneficiary	16,800	5.0	84,000	933
Sub Total				11,039,750	122,664
OUTCOME2 :WATER					
Boreholes	1 Per Community	7	2,500,000	17,500,000	194,444
Water Tank	10,000 Litre Capacity	56	99,000	5,544,000	61,600
Water	Litres	42,000,000	2	84,000,000	933,333
Jericans	Pieces	28,000	200	5,600,000	62,222
Water Purification Tablets		2,100,000	3	6,300,000	70,000
Sub Total				118,944,000	1,321,600

OUTCOME 3:LIVESTOCK					
Vaccination/ Deworming	Cows	42,000	33	1,386,000	15,400
Vaccination/ Deworming	Goats	70,000	11	770,000	8,556
Fodder	MT	7,000	22,000	154,000,000	1,711,111
Sub Total				156,156,000	1,735,067
POST CRISIS PHASE					
OUTCOME 4:					
DISASTER RISK REDUCTION					
Training	Training Days	112	10,000	1,120,000	12,444
Coordination	Monthly Plus Two	7	15,000	105,000	1,167
Sub total				1,225,000	13,611
FEASIBILITY- KATILU IRRIGATION PROJECT					
Consultants	Lump sum	1	250,000	250,000	2,778
Travel	Lump sum	1	200,000	200,000	2,222
Meals and Accommodation	Lump sum	1	100,000	100,000	1,111
Security	Lump sum	1	50,000	50,000	556
				600,000	6,667
<u>Direct Programme Related Costs</u>					
Project Manager	Staff	1	1,430,640	1,430,640	15,896
Disaster Risk Reduction Specialist	Staff	1	650,000	650,000	7,222
Project Officer	Staff	2	833,238	1,666,476	18,516
Relief coordinators	Staff	6	420,000	2,520,000	28,000
Water Consultant	Staff	2	694,365	1,388,730	15,430
Livestock Consultant	Staff	2	694,365	1,388,730	15,430
Conflict Mitigation Consultant	Staff	2	694,365	1,388,730	15,430
Accountant	Staff	1	829,197	829,197	9,213
Admin (Partner Support)	Staff	5	360,000	1,800,000	20,000
Points People	Staff	5	150,000	750,000	8,333
Monitoring And Evaluation Adviser	Staff	1	833,238	833,238	9,258
Driver	Staff	3	223,665	670,995	7,456
Committee Members	10 members per Centre	280	3,500	980,000	10,889
				16,296,736	181,075
<u>Operational Costs</u>					
Brand Visibility	T- Shirts Print	500	1,000	500,000	5,556
Surveys	1 survey Per Centre	28	18,000	504,000	5,600
Sub total				1,004,000	11,156
TOTAL DIRECT ASSISTANCE					
				577,660,486	6,418,450
INDIRECT COSTS: PERSONNEL, ADMINISTRATION, OPERATIONS & SUPPORT					
	<u>Hourly Rate Apportionment</u>				
Regional Project Manager	USD \$1,520 Rate, 40 Hours	1	364,800	364,800	4,053

				364,800	4,053
<u>Office Operations</u>					
Office rent	Months	5	85,000	425,000	4,722
Bank Charges	Months	5	3,600	18,000	200
Office Utilities	Months	5	70,000	350,000	3,889
Office stationery	Months	6	30,000	180,000	2,000
			188,600	973,000	10,811
<u>Travel</u>					
CRWRC Vehicles	Monthly Rental Charge	5	480,000	2,400,000	26,667
Partner Travels	Monthly	5	350,000	1,750,000	19,444
Vehicle Maintenance	Monthly	5	200,000	1,000,000	11,111
Fuel And Insurance	Monthly	5	200,000	1,000,000	11,111
Food And Accommodation	Monthly	5	540,000	2,700,000	30,000
			1,770,000	8,850,000	98,333
<u>Audit And Monitoring</u>					
CRWRC Home Office Expense	0.03			17,204,714	191,163
Audit of ACT appeal	Estimate			550,000	6,111
				17,754,714	197,275
TOTAL PERSONNEL, ADMIN. & OPERATIONAL SUPPORT				27,942,514	310,472
TOTAL PROJECT BUDGET				605,603,000	6,728,922
International Coordination Fee (3%)				18,168,090	201,868
TOTAL APPEAL PROJECT BUDGET REQUESTED- CRWRC				623,771,090	6,930,790

LWF

EXPENDITURE					
DIRECT ASSISTANCE	Type	No.	Unit Cost	Budget	Budget
WATER SECTOR	Unit	Units	KES	KES	USD
Water tankering fuel	Months	12	200,000	2,400,000	27,273
Rehab of water points	Points	4	1,000,000	4,000,000	45,455
Drilling of borehole, windmill and stroage tank	Boreholes	1	3,800,000	3,800,000	43,182
Dubaa pumps	Pcs	2	1,300,000	2,600,000	29,545
Rehab of water pan	Pans	1	800,000	800,000	9,091
Ferro cement tanks	Tanks	4	500,000	2,000,000	22,727
Training for community and technicians	Tranings	7	150,000	1,050,000	11,932
Plastic water tanks – 5000m ³ for schools	Tanks	10	140,000	1,400,000	15,909
Rapid 2-day WASH sensitization campaign	Campaigns	6	50,000	300,000	3,409

SUB TOTAL WATER SECTOR				18,350,000	208,523
LIVESTOCK					
De-stocking (shoats)	Animals	5,000	2,500	12,500,000	142,045
De-stocking (cattle)	Animals	500	10,000	5,000,000	56,818
De-worming(shoats)	Animals	200,000	80	16,000,000	181,818
Vaccination (cattle & shoats)	Animals	50,000	100	5,000,000	56,818
Veterinary services, treatment of diseases - cattle & shoats	Animals	50,000	150	7,500,000	85,227
Livestock branding - cattle	Animals	100,000	150	15,000,000	170,455
Livestock branding - shoats	Animals	200,000	100	20,000,000	227,273
SUB TOTAL LIVESTOCK				81,000,000	920,455
OTHER DIRECT PROGRAM COSTS					
DIRECT SALARIES AND BENEFITS					
Share of staff WATER	Months	12	300,000	3,600,000	40,909
Training & staff capacity building WATER	l/sum	1	250,000	250,000	2,841
Share of staff LIVESTOCK	Months	12	450,000	5,400,000	61,364
Training & staff capacity building LIVESTOCK	l/sum	1	250,000	250,000	2,841
Meetings, incl. coordination	Months	12	30,000	360,000	4,091
Telephone and Communication	Months	12	40,000	480,000	5,455
SUB TOTAL OTHER DIRECT COSTS				10,340,000	117,500
TRAVEL					
Travel	Months	12	125,000	1,500,000	17,045
SUB TOTAL TRAVEL				1,500,000	17,045
TOTAL DIRECT ASSISTANCE				111,190,000	1,263,523
TRANSPORT & WAREHOUSING					
TRANSPORT					
Vehicles- Rental WATER	Months	12	209,000	2,508,000	28,500
Vehicles-Fuel WATER	Months	12	110,000	1,320,000	15,000
Vehicles- Rental LIVESTOCK	Months	12	209,000	2,508,000	28,500
Vehicles-Fuel LIVESTOCK	Months	12	110,000	1,320,000	15,000
SUB TOTAL TRANSPORT				7,656,000	87,000
TOTAL TRANSPORT & WAREHOUSING				7,656,000	87,000
INDIRECT COSTS: PERSONNEL, ADMINISTRATION, OPERATIONS & SUPPORT					
SALARIES OFFICE AND COMMUNICATION					
Share of salaries & benefits, Nairobi Nairobi (partly)	Months	12	250,000	3,000,000	34,091
Share of office cost Nairobi	Months	12	150,000	1,800,000	20,455

Share of salaries & benefits, Kakuma office (partly)	Months	12	250,000	3,000,000	34,091
Share of office cost Kakuma	Months	12	150,000	1,800,000	20,455
Office supplies	Months	12	150,000	1,800,000	20,455
Communication and visibility costs	Months	12	30,000	360,000	4,091
TOTAL PERSONNEL, ADMIN & SUPPORT				11,760,000	133,636
AUDIT & MONITORING					
AUDIT AND M&E					
Audit	l/sum	1	880,000	880,000	10,000
Monotoring And Evaluation	Quarters	4	75,000	300,000	3,409
Monitoring And Evaluation	Quarters	4	75,000	300,000	3,409
TOTAL AUDIT & MONITORING				1,480,000	16,818
Total Project Costs				132,086,000	1,500,977
OTHER COSTS					
International coordination fee 3%				3,962,580	45,029
Sub Total				3,962,580	45,029
TOTAL EXPENDITURE LWF- Direct				136,048,580	1,546,007

LWF-KELC

LWF-KELC	Type	No.	Unit Cost	Total cost	Total cost
	Unit	Units	KSH	KSH	USD
EXPENDITURE					
DIRECT ASSISTANCE					
<u>Crisis Phase (if applicable)</u>					
<u>Food Relief Assistance</u>					
Maize (Milling)	kg	100,000	75	7,500,000	83,333
Beans	kg	20,000	90	1,800,000	20,000
Oil	ltr	10,000	150	1,500,000	16,667
Supplementary feeding- Unimix	kg	10,000	100	1,000,000	11,111
Salt	kg	1,000	25	25,000	278
SUB TOTAL				11,825,000	131,389
<u>Non Food Relief Assistance</u>					
Plastic water tanks, 10,000 ltr each	Tanks	7	70,000	490,000	5,444
Installation of water tanks	Tanks	7	20,000	140,000	1,556
SUB TOTAL				630,000	7,000
Advocacy - involve Church leaders	Month	7	25,000	175,000	1,944
<u>Direct Programme Related</u>					

<u>Costs</u>					
Salaries & benefits for staff (e.g nutritionist, engineers, logistician, communications staff, photographer) - List by item					
Staff for food distribution	Month	7	175,000	1,225,000	13,611
Staff for advocacy	Month	7	175,000	1,225,000	13,611
SUB TOTAL				2,450,000	27,222
TOTAL DIRECT ASSISTANCE				15,080,000	167,556
TRANSPORT, WAREHOUSING & HANDLING					
<u>Transport</u>					
Hire/ Rental of Vehicles	Month	7	250,000	1,750,000	19,444
TOTAL TRANSPORT, WAREHOUSING & HANDLING				1,750,000	19,444
INDIRECT COSTS: PERSONNEL, ADMINISTRATION, OPERATIONS & SUPPORT					
<u>Office Operations</u>					
Office stationery	Month	7	16,000	112,000	1,244
<u>Communications</u>					
Telephone and fax	Month	7	30,000	210,000	2,333
TOTAL PERSONNEL, ADMIN & SUPPORT				322,000	3,578
AUDIT & MONITORING					
Audit of ACT Funds	Estimate			180,000	2,000
Monitoring & Evaluation	Month	7	100,000	700,000	7,778
LWF supervision and administration	Estimate			729,000	8,100
TOTAL AUDIT & MONITORING				1,609,000	17,878
International coordination fee 3%				562,830	6,254
TOTAL EXPENDITURE				19,323,830	214,709

LWF-ELCK

	Unit	No. Of Units	Unit cost KSH	Total cost KSH	Total cost USD
EXPENDITURE					
DIRECT ASSISTANCE					
<u>Crisis Phase (if applicable)</u>					
<u>Food Relief Assistance</u>					
Maize	kg	165,000	75	12,375,000	137,500
Beans	kg	9,900	90	891,000	9,900
Cooking oil	ltr	9,900	150	1,485,000	16,500
Salt	kg	3,300	25	82,500	917
SUB TOTAL				14,833,500	164,817
Direct Programme Related Costs					

Salaries & benefits for staff (e.g nutritionist, engineers, logistician, communications staff, photographer) - List by item					
Share of staff CENTRAL	month	79,000	6	474,000	5,267
Share of staff WEST POKOT	month	120,000	6	720,000	8,000
SUB TOTAL				1,194,000	13,267
TOTAL DIRECT ASSISTANCE					
				16,027,500	178,083
TRANSPORT, WAREHOUSING & HANDLING					
<u>Transport</u>					
Hire/ Rental of Vehicles - CENTRAL	month	320,000	6	1,920,000	21,333
Hire/ Rental of Vehicles - WEST POKOT	month	160,000	6	960,000	10,667
TOTAL TRANSPORT, WAREHOUSING & HANDLING					
				2,880,000	32,000
AUDIT & MONITORING					
Audit of ACT Funds	Estimate			180,000	2,000
LWF supervision and administration	Estimate			459,000	5,100
TOTAL AUDIT & MONITORING					
				639,000	7,100
International coordination fee 3%					
				586,395	6,516
TOTAL EXPENDITURE- LWF ELCK					
				20,132,895	223,699

The National Council of Churches of Kenya (NCCK)

	Type	No.	Unit Cost	Budget	Budget
	Unit	Units	Kenya Shilling	Kenya Shillings	USD
EXPENDITURE					
DIRECT ASSISTANCE					
<u>Food Items</u>					
Supplementary Feeding to Vulnerable People (UNIMIX)	Tonnes	9	130,000	1,170,000	13,000
Dry Milk	Tonnes	4	90,000	360,000	4,000
Dry Milk	Bags	1,000	2,600	2,600,000	28,889
Dry Beans	Bags	500	5,600	2,800,000	31,111
Beans	Bags	1,000	9,900	9,900,000	110,000
Maize Flour	Packets	10,000	150	1,500,000	16,667
Cooking Oil	Litres	10,000	120	1,200,000	13,333
Unimix (for Infants)	Packets	3,000	100	300,000	3,333
Salt	Packets	10,000	40	400,000	4,444
Rice	Kgs	50,000	150	7,500,000	83,333
Beans	Kgs	30,000	200	6,000,000	66,667
Cooking Oil	Litres	15,000	300	4,500,000	50,000
Salt	Kgs	10,000	30	300,000	3,333

Uji-Mix for children	Kgs	20,000		50	1,000,000	11,111
Sugar	Kgs	15,000		80	1,200,000	13,333
Sub Total					40,730,000	452,556
<u>Non Food Items</u>						
<u>Hygiene and Sanitation</u>						
Water Provision Tankering	Litres	40,000		12	480,000	5,333
Drilling and Equipping one Borehole	No.	2		2,250,000	4,500,000	50,000
Aquatabs	No.	10,000		30	300,000	3,333
Provision of PVC Water Tanks	Pieces	10		45,000	450,000	5,000
<u>Non Food Items</u>						
Boreholes	Boreholes	5		3,000,000	15,000,000	166,667
Dewormers	Dewormers	3,000		250	750,000	8,333
<u>Non Food Items (Farm Inputs)</u>						
SEEDS						
Maize	Kgs	15,000		250	3,750,000	41,667
Beans	Kgs	10,000		300	3,000,000	33,333
Others (Cassava, Soghum, Wimbi)	Kgs	5,000		400	2,000,000	22,222
Sub total					30,230,000	335,889
ADVOCACY						
Identification of Communication Issues through Regional Fora	Fora	9		200,000	1,800,000	20,000.00
Analysis of Information	Fora	9		100,000	900,000	10,000.00
National Fora	Fora	2		1,000,000	2,000,000	22,222.22
Engagement with Authorities	Processes	3		150,000	450,000	5,000.00
Engagement with Media	Airtime / Space	10		300,000	3,000,000	33,333.33
Sub total					8,150,000	90,555.56
<u>Direct Programme Related Costs</u>						
Logisticians 9 Regional Coordinators	Staff	9		540,000	4,860,000	54,000
Communication Officer	Staff	2		240,000	480,000	5,333
Photographer	Staff	2		180,000	360,000	4,000
Sub total					5,700,000	63,333
TOTAL DIRECT ASSISTANCE					84,810,000	942,333
TRANSPORT, WAREHOUSING & HANDLING						
<u>Transport (of relief materials)</u>						

Hire/ Rental of Vehicles	Lorries	11		180,000	1,980,000	22,000
Fuel	Mileage	15,000		100.0	1,500,000	16,667
Warehousing						
Rental of warehouse	Warehouse	9		50,000.0	450,000	5,000
Wages for Security/ Guards		270		20,000.0	5,400,000	60,000
Handling						
Wages for labourers	Months	324		90,000.0	29,160,000	324,000
Wages for Drivers		26	6	20,000.0	3,120,000	34,667
TOTAL TRANSPORT, WAREHOUSING & HANDLING					41,610,000	462,333
CAPITAL ASSETS (over US\$500)						
Computers and accessories	Laptops	5		80,000	400,000	4,444
Computers and accessories	Computers	2		100,000	200,000	2,222
Printers	Printers	4		90,000	360,000	4,000
Office Furniture						
Vehicles	Vehicle	1		4,500,000	4,500,000	50,000
Communications equipment	Cameras	3		300,000	900,000	10,000
TOTAL CAPITAL ASSETS					6,360,000	70,667
PRE-CRISIS ASSISTANT						
Constitution of Relief Committees	Locations	3		15,000	45,000	500
Developing Criteria for Targeting Beneficiaries	Committees	3		15,000	45,000	500
Identification & Registration of Beneficiaries	Days	3		10,000	30,000	333
Disaster Preparedness	Workshop	3		60,000	180,000	2,000
Sub Total					300,000	3,333
INDIRECT COSTS: PERSONNEL, ADMINISTRATION, OPERATIONS & SUPPORT						
<u>Staff salaries</u>		No of staff	months			
Salaries e. g 20% for Programme Director)	People	1	6	40,000	240,000	2,667
Salaries e. g 20% for Finance Director)	People	1	6	40,000	240,000	2,667
Salaries for Programme Officer 20%	People	2	6	30,000	360,000	4,000
Salaries 40 % Accountant	Months	3	6	40,000	720,000	8,000
Salaries for National Coordinator	Months	3	6	80,000	1,440,000	16,000

Salaries For 5 Field Coordinators	Months	3	6	60,000	1,080,000	12,000
Salaries for Administrative Secretary	Months	3	6	35,000	630,000	7,000
<u>Staff benefits</u>						
Per Diems	Days	222		5,000	1,110,000	12,333
Housing Allowances						
etc						
<u>Office Operations</u>						
Office rent	Months	1	6	50,000	300,000	3,333
Office Utilities	Quarters	2	6	50,000	600,000	6,667
Office stationery						
<u>Communications</u>						
Telephone and fax		3	6	50,000	900,000	10,000
Translation support for Communicator		90	6	3,000	1,620,000	18,000
Transport for Communicator		13	6	5,000	390,000	4,333
<u>Other</u>						
Insurance						
Monitoring & Evaluation	Estimate	9	6	50000	2,700,000	30,000
TOTAL PERSONNEL, ADMIN. & OPERATIONAL SUPPORT					12,330,000	137,000
AUDIT						
Audit of ACT appeal	Estimate				550,000	6,111
TOTAL AUDIT					550,000	6,111
TOTAL Project Budget					145,960,000	1,621,778
International Coordination Fee (3%)					4,378,800	48,653
TOTAL APPEAL PROJECT BUDGET REQUESTED-NCKK					150,338,800	1,670,431

Norwegian Church Aid

	Type	No.	Unit Cost	Budget	Budget
	Unit	Units	KSHS	KSHS	USD
EXPENDITURE					
DIRECT ASSISTANCE					
<u>Emergency Assistance</u>					
Food Vouchers	HH	4,000	1,500	6,000,000	67,415.73
De Stocking for slaughter	Goats	4,000	2,000	8,000,000	89,887.64
Water Vouchers	HH	2,000	3,624	4,624,000	51,955.06
BP5 - donation in kind from NCA	Cartons	1,540			0.00
PVC water storage tanks (10,000ltres)	Tanks	50	100,000	4,100,000	46,067.42
Donkey carts and donkey		20	35,000	700,000	7,865.17
Construction of water storage tanks	Tanks	4	2,000,000	8,000,000	89,887.64
<u>Recovery phase</u>					
Rehabilitation of rural water supply	centres	5	10,225,000	102,250,000	1,148,876.40
Fodder production along Daua river bank	farmers	150	150,000	22,500,000	252,808.99
Restocking for vulnerable HHS	HHS	200	55,000	11,000,000	123,595.51
Construction of water canal 2 km	Metres	2,000	8,000	16,000,000	179,775.28
<u>Direct Programme Related Costs</u>					
Emergency coordinator (12 months)	person	24	77,500	1,860,000	20,898.88
WATSAN officer (24 months)	person	24	150,000	3,600,000	40,449.44
Field monitors (4 x 12 months / 2 x 12 months)	person	144	17,500	2,520,000	28,314.61
TOTAL DIRECT ASSISTANCE				191,154,000	2,147,798
TRANSPORT, WAREHOUSING & HANDLING					
<u>Transport (of relief materials)</u>					
Hire/ Rental of Vehicles	4wd				
Fuel	LITRES	3,600	130.0	468,000	5,258.43
<u>Warehousing</u>					
Rental of warehouse	1.00	10,000	24.0	240,000	2,696.63
Wages for Security/ Guards	1.00	10,000	24.0	240,000	2,696.63
<u>Handling</u>					
Wages for labourers	1.00	5,000	24.0	192,000	2,157.30
Wages for Drivers	1.00	25,000	24.0	960,000	10,786.52
TOTAL TRANSPORT, WAREHOUSING & HANDLING				2,100,000	23,596
CAPITAL ASSETS (over US\$500)					
Computers and accessories	Laptop	2	75,000	150,000	1,685.39
Printers				0	0.00
Office Furniture				0	0.00
Vehicles	L/cruiser	1	5,800,000	5,800,000	65,168.54
Digital camera		2	47,500	95,000	1,067.42
TOTAL CAPITAL ASSETS				6,045,000	67,921

INDIRECT COSTS: PERSONNEL, ADMINISTRATION, OPERATIONS & SUPPORT					
<u>Staff salaries</u>					
20% for Programme Director	person	25,000	24	600,000	6,741.57
20 % for Finance Director	person	12,000	24	288,000	3,235.96
Administrator 50%	person	30,000	24	720,000	8,089.89
-					0.00
15% for Programme Director	person	15,000	24	360,000	4,044.94
20 % for Finance Director	person	9,000	24	216,000	2,426.97
Support staff 35%	person	14,000	24	336,000	3,775.28
				0	0.00
<u>Office Operations</u>					
					0.00
Office rent		28,000	24	672,000	7,550.56
Office Utilities		12,500	24	300,000	3,370.79
Office stationery		11,500	24	276,000	3,101.12
<u>Communications</u>					
Telephone and fax		16,090	24	386,160	4,338.88
Translation support for Communicator				0	0.00
Transport for Communicator				0	0.00
<u>Other</u>					
Insurance				0	0.00
Monitoring & Evaluation	Estimate	600,000	1	600,000	6,741.57
Partner Accompaniment		70	6,000	420,000	4,719.10
TOTAL PERSONNEL, ADMIN. & OPERATIONAL SUPPORT				5,174,160	58,136.63
AUDIT					
Audit of ACT appeal	Estimate			140,000	1,573.03
TOTAL AUDIT				140,000	1,573.03
TOTAL Project Budget				204,613,160	2,299,024
International Coordination Fee 3%				6,138,395	68,970.73
TOTAL APPEAL PROJECT BUDGET REQUESTED				210,751,555	2,367,995

CWS

Type	No.	Unit Cost	Budget	Budget
Unit	Units	Ksh/\$	Ksh	USD
EXPENDITURE				
DIRECT ASSISTANCE				
<i>MNP Distribution and Capacity building</i>				
MNP for U5 1st Batch	300000	\$0.02	540,000	6,000
Inland transport Costs	1	\$200	18,000	200
Staff Partner training	1	\$1000	90,000	1,000

Monitoring & home visits	5	\$500	225,000	2,500
Conduct Health and Nutrition awareness			-	
Nutrition class/ Information sharing	5	\$500	225,000	2,500
Travel to Filed - In country travel, meals & accom.	5	\$600	270,000	3,000
Fuel/mileage costs	5	\$700	315,000	3,500
Subtotal MNP distribution and H/Nutrition			1,683,000	18,700
DIRECT PROGRAM RELATED COSTS				
Field Nutritionist	5	\$1000	450,000	5,000
Meals & accommodation during monitoring	32	5000	160,000	1,778
Subtotal Direct Program Related costs			610,000	6,778
TOTAL DIRECT ASSISTANCE			2,293,000	25,478
TRANSPORT OF RELIEF MATERIALS				
Fuel/mileage			147,000	1,633
Subtotal Transport			147,000	1,633
INDIRECT COSTS: PERSONNEL, ADMINISTRATION, OPERATIONS & SUPPORT				
Office rent			18,000	200
Office Supplies	12	2500	30,000	333
Telephone and fax			127,530	1,417
Sub Total Indirect costs			175,530	1,950
Audit of ACT appeal			234,000	2,600
ACT Communication and Visibility			90,000	1,000
SUB TOTAL			2,939,530	32,661
International Coordination Fee (3%)			88,186	980
TOTAL APPEAL PROJECT BUDGET REQUESTED-CWS direct			3,027,716	33,641
Exchange rate: 1USD: Ksh90				

CWS-ACK Kitui Diocese

	Type	No.	Unit Cost	Budget	Budget
EXPENDITURE					
DIRECT ASSISTANCE					
Food					
Maize	Metric ton	25	75,000	1,875,000	20,833
Beans	Metric ton	5	110,000	550,000	6,111
Oil	Litres	3,000	120	360,000	4,000
Salt	Packet	500	48	24,000	267
Unimix	Packet	5,000	15	75,000	833
Non Food Items					

Plastic water tanks – 5000m3 for schools	Each	4	50,000	200,000	2,222
Installation of 5000m3 water tanks	Each	4	40,257	161,028	1,789
Rehabilitation/Recovery					
Assessment	Each	1	189,400	189,400	2,104
Sand dams	Each	2	529,000	1,058,000	11,756
Shallow well & installation of pumps	Each	2	175,420	350,840	3,898
Capacity building, Training & Meetings	Each	12	19,190	230,280	2,559
DTC seeds	Metric ton	10	175,000	1,750,000	19,444
CWS DRR interventions	Each	1		900,000	10,000
Direct Programme Related Costs					
Salaries e. g 30 for Programme Coordinator)	Month	12	35,890	430,680	4,785
Salaries e. g 30% for Finance Officer)	Month	12	12,145	145,740	1,619
Salaries for Project secretary/Admin assistant...30%..)	Month	12	17,308	207,696	2,308
Field officer	Month	12	43,908	526,890	5,854
SUBTOTAL DIRECT ASSISTANCE				9,034,554	100,384
TRANSPORT OF RELIEF MATERIALS					
Hire/ Rental of Vehicles	Trips	15	15,000	225,000	2,500
TOTAL TRANSPORT				225,000	2,500
INDIRECT COSTS: PERSONNEL, ADMINISTRATION, OPERATIONS & SUPPORT					
Staff Per Diems	Month	12	7,200	86,400	960
Office Operations				-	-
Travels, meals & accommodation	Each	24	9,978	239,472	2,661
Meetings	Each	12	2,700	32,400	360
Office Utilities	Month	12	4,500	54,000	600
Office stationery	Month	12	3,000	36,000	400
Communications					
Telephone and fax	Month	12	7,000	84,000	933
TOTAL PERSONNEL, ADMIN. & OPERATIONAL SUPPORT				532,272	5,914
Audit of ACT appeal	Estimate			150,000	1,667
SUBTOTAL APPEAL				9,941,826	110,465
International coordination fee 3%				298,255	3,314
TOTAL APPEAL EXPENDITURE CWS-ACK KITUI DIOCESE				10,240,081	113,779

Exchange rate: 1US\$: Ksh90					
-----------------------------	--	--	--	--	--

CWS_COMMUNITY RESOURCE INITIATIVE

	Type	No.	Unit Cost	Budget	Budget
	Unit	Units	Ksh	Ksh	USD
EXPENDITURE					
DIRECT ASSISTANCE					
Food					
Maize	metric ton	65.25	60,000	3,915,000	43,500
Beans	metric ton	8.7	90,000	783,000	8,700
Cooking oil	ltrs	870	270	234,900	2,610
Salt	pkts	3480	27	93,960	1,044
Soya beans	kgs	1740	120	208,800	2,320
Direct Programme Related Costs					
Director programs	months	5	20,000	100,000	1,111
Two Field Officers	months	5	30,000	150,000	1,667
Secretary	months	5	15,000	75,000	833
TOTAL DIRECT ASSISTANCE				5,560,660	61,785
TRANSPORT, WAREHOUSING & HANDLING					
Hire/ Rental of Vehicles	Trips	2	18,000	36,000	400
Fuel	kms	300	90	27,000	300
TOTAL TRANSPORT, WAREHOUSING & HANDLING				63,000	700
INDIRECT COSTS: PERSONNEL, ADMINISTRATION, OPERATIONS & SUPPORT					
Office rent	months	1	18,000	18,000	200
Communications				-	100
Telephone and fax		1	9,000	9,000	100
TOTAL PERSONNEL, ADMIN. & OPERATIONAL SUPPORT				27,000	400
Audit of ACT appeal	Estimate			90,000	1,000
SUB TOTAL APPEAL				5,740,660	63,885
International Coordination fee 3%					1,917
TOTAL APPEAL EXPENDITURE CWS-CRI					65,802
Exchange rate is 1USD: Ksh 90					

ANNEX 1-BACKGROUND INFORMATION OF THE IMPLEMENTING PARTNERS (IPS)

Implementing partners for Anglican Church of Kenya (ACK) DOSS - IPs

The four ACK implementing partners has been involved in several emergency response interventions in providing food, non-food items and rehabilitation projects during famine, drought and floods of 1994, 1996-1997, 2003, 2004, 2005 and 2006 in Kajiado, Pwani, Western, Mt. Kenya, Mt. Kenya East, Eldoret, Nyanza, UCCS etc in 2008/09 in responding to the post Election violence in Eldoret, Nakuru, and Mt. Kenya regions. This has led to rehabilitation projects which are ongoing in some of these areas. Support for these responses was mainly through ACT appeals.

In 1996, ACK established a Disaster Management program (DMP) through which it has developed some capacity for disaster response among the Regional Christian Community services (RCCS'S) staff and clergy. These initiatives have enhanced its skills in responding to disasters and have given ACK the exposure to ACT principles and guidelines, the humanitarian code of conduct and the SPHERE standards. The capacity of ACK to respond to disasters is being assessed with support from ACT. The RCCS are represented by ACK-DOSS at the ACT forum and other national disaster meetings, while the regions are members to the ACT Kenya Sub regional Forums.

In year 2006, Ukamba , Kajiado and Mt. Kenya responded to the drought through provision of food and non food items to affected households. As a recovery activity certified seeds were distributed to 4,532 farmers. The CCS have also being involved rehabilitation project basically on water harvesting that saw the construction of 24 subsurface dams, 3 earth dams and five shallow wells.

2008/2009 Nakuru, Mt. Kenya responded to the prost election violence in food, non food, resettlement, and recovery and rehabilitation activities to a total of over 6,000 households. Nakuru peace building initiatives are on going and peace building committees and structures have being strengthened. These structures were used by the ACT Kenya forum during the Kenya Constitutional referendum.

The four ACK implementing partners have gained experience and capacity building over the years as they implement the projects and also through the trainings organized by the Disaster Management desk and other partners. ACK has established a disaster response teams, some of the members have being trained on humanitarian policies and procedures, ACT guidelines, code of conduct and sphere standards. ACK is committed to adhere to the ACT policies, guidelines and principles.

Implementing partners for The Lutheran World Federation /Department of World Service

- Kenya Evangelical Lutheran Church (KLEC)
- Evangelical Lutheran Church of Kenya (ELCK)

Kenya Evangelical Lutheran Church (KELC)

Kenya Evangelical Lutheran Church was officially inaugurated as a full-fledged Church on 16 February 1992, having been planted in Kenya by the Evangelical Lutheran Church in Tanzania as early as 1968. With the current size of 25,673 members, the Church touches on 50% of all the Provinces in Kenya. It stretches from Nairobi Province and the Rift Valley, eastwards to the Coast Province and north-eastwards to Eastern Province. The policies of the Church are made by the Executive Council and approved by the General Assembly as regulated by the constitution. The day to day work is administered by the Church officers, namely the Bishop, the Executive Secretary and the treasurer, assisted by the incumbent coordinators of the women desk, youth desk, HIV/AIDS desk, communications desk and by the Director of Christian Education. The officers of the Church operate under the coordination of the executive committee of the Church.

The Executive Council is the main action-hub of the General Assembly. It has a total of 12 sub-committees that cut across all the focal thrust areas of the Church. For proper coordination of ministry, the Church has four Church districts that coordinate work in 112 congregations administered through nine parishes. There are 7 projects that are coordinated directly by the Head Office and 14 projects, which are coordinated at parish level. KELC was the first AKF implementing member to deliver about 26 tons of relief assistance to IDPs in Mathare slums in Nairobi with support from CWS. This was followed with another intervention of food relief worthy US\$ 15,000 in Mombasa from LWR. KELC in this appeal will target relief assistance in Ukambani and Tana River District in collaboration with CWS.

Evangelical Lutheran Church of Kenya (ELCK)

The Evangelical Lutheran Church in Kenya was founded in 1948 when the Swedish Lutheran Mission (Bibletoognavanner) began work in Kenya. This followed visits by mission representatives Axel B. Svensson and Anton Jonsson who had meetings with the Gusii people in 1939 and were offered plots to build mission stations. They settled for the offer of the Wanjare (Bonchari) people where the present Itierio is located. Along the way it was joined by 4 other mission organizations from 3 additional countries to develop a Lutheran church here and the latest one being the Lutheran Church Missouri Synod. The church was constituted in 1959 as the Lutheran Church of Kenya, (LCK) and registered as an independent church in 1963. Later its name was changed to the Evangelical Lutheran Church in Kenya, (ELCK) in 1978. The church through her Annual Council of 1995 decided to take the Episcopal polity and by 1996 elected her first Bishop Rev. Francis Nyamwaro Onderi. The Church has four Dioceses under four Bishops and one special Diocese called Uhuru Highway Lutheran Cathedral Nairobi which is the Parish for the Arch Bishop Dr. Walther Obare Omwanza. The church has congregations in all the eight provinces in Kenya and eastern Uganda and has had a lot of mission work in Southern Sudan.

Among the four Dioceses two of them are in areas where the Country is experiencing serious drought and famine. This is the greater West Pokot (North West Diocese) and Central Diocese covers 5 regions among the nine regions of Kenya thus covering 43 counties out of 47 counties in Kenya. Most of Central Diocese areas are semi arid and others arid meaning they get less rainfall than other parts of the country.

Previous experience in emergency response (list only the most recent – e.g. last two emergency responses):

In the month of June 2011 ELCK received an amount of Ksh. 4.4 Million (About US \$49,000) from the LCMS World Relief & Human Care which was distributed to the larger Central Diocese (About Ksh.3 Million (US \$ 33,333) and Ksh. 1.2 Million (US \$ 13,333) given to West Pokot.

Implementing partners for National Council of Churches in Kenya (NCCK) -IMs

- Presbyterian Church of East Africa (PCEA)
- Methodist Church of Kenya (MCK)

Two NCCK member churches Presbyterian Church of East Africa (PCEA) and the Methodist Church of Kenya will be the IPs for the NCCK component in this Appeal.

NCCK is a member of ACT Alliance operating at the national and community levels in Kenya. NCCK is a membership organization with 26 member churches. In addition, NCCK has established 9 regional/field offices that will be used to implement the NCCK component in this Appeal. NCCK has built the capacity of the 9 field offices in disaster and emergency response.

In addition NCCK is a member of the ACT Kenya Forum, with programmes and projects in development, disaster response and advocacy. NCCK is aware of, and committed to adhering to ACT principles and guidelines the humanitarian code of conduct and willing to work according to the sphere standards. NCCK will also be responsible for the two member churches – namely Presbyterian Church of East Africa and Methodist Church of Kenya that are enjoined together as NCCK IPs.

The Presbyterian Church of East Africa (PCEA)

Founded in 1891, the PCEA is one of the mainstream churches in Kenya. It has for over the last 100 years been involved in various humanitarian emergencies and relief operations. Its Board for Social Responsibility (BSR) was created in 1979 to organise, supervise and maintain PCEA's social development activities and humanitarian projects. The BSR has been involved in several emergency responses. For example it provided food relief and seed distribution in Ikutha and Mutha Divisions of the Kitui District in 2005. It has also implemented similar but smaller programmes in Kambaland, Maasailand, Samburu, Tana River and Garissa.

PCEA has a committee dealing with disaster management and mitigation. The committee comprises people who have been trained on disaster management by Church World Service and Norwegian Church Aid through the ACT capacity building initiatives. These initiatives have enhanced the team's skills in responding to disasters and have given PCEA the exposure to ACT principles and guidelines, the Humanitarian Code of Conduct and the SPHERE standards. In 2006, PCEA in partnership with PDA responded to the drought situation in the Ukambani area. Last year, again PCEA worked closely with PDA in Molo and its environs to cater for the needs of IDPs. In this new intervention PCEA will continue working with PDA in Kyuso and Mutha formerly in greater Kitui District which is the same area the Church responded during the 2006 drought.

Methodist Church of Kenya (MCK)

According to the Deed of Foundation, Methodist Church in Kenya grew out of the United Methodist Free Churches, whose Missionary Committee in 1860 agreed to send a mission to East Africa and whose missionaries first reached Mombasa in 1862. In 1907 the United Methodist Free Churches became part of the United Methodist Church, which in 1932 became part of the Methodist Church. In 1967 Methodist Church in Kenya became autonomous from the British Methodist Church.

The doctrinal standards of the Methodist Church in Kenya are: The Methodist Church claims and cherishes its place in the Holy Catholic Church which is the Body of Christ. It rejoices in the inheritance of the apostolic faith and loyally accepts the fundamental principles of the historic creeds and the Protestant Reformation. It ever remembers that in the Providence of God Methodism was raised up to spread Scriptural Holiness through the land by the proclamation of the Evangelical Faith and declares its unfaltering resolve to be true to its divinely appointed mission. It is the universal conviction of the Methodist people that the office of the Christian ministry depends upon the "œcall of God" who bestows the gifts of the Spirit, the grace and the fruit, which indicate those whom He has chosen.

The Methodist Church holds the doctrine of the Priesthood of all believers and consequently believes no priesthood exists which belongs exclusively to a particular order or class of men [or women] but in the exercise of its corporate life and worship special qualifications for the discharge of special duties are required and thus the principle of representative selection is recognized

NCKK, PCEA and MCK Involvement in Emergency Response

In 2007 – 2008 NCKK, the Presbyterian Church of East Africa (PCEA) and the Methodist Church in Kenya (MCK) were involved in emergency response during Kenya's post election violence that had left about 1,300 people dead and 600,000 displaced. PCEA and MCK are members of NCKK. After a rapid emergency assessment, the three organizations mobilised their structures and facilitated the provision of the following to the identified target groups:-

- Food Aid Items – provided nutritious food including UNIMIX and proteins for the vulnerable groups that include children, the sick, pregnant women and people with disabilities.
- Non Food Items – provided tents for vulnerable groups, blankets, mosquito nets and kitchen sets.

- Established 'safe spaces' for children in the IDP camps. These comprised of recreational activities through sports equipment and toys / games.
- Provided psycho-social support in the IDP camps.

Each of the organization worked in different geographical areas where NCK worked in Coast, Nyanza, Rift Valley, Western and Nairobi Provinces; MCK intervened in Nairobi, South Rift and Central; and PCEA intervened in Nakuru, Molo, Naivasha, Coast and Central areas.

Secondly the three organizations independently responded to famine and drought that was declared a national disaster in Kenya on 16th January 2009. NCK in partnership with Diakonia Sweden embarked on famine relief intervention between May and July 2009. The intervention reached a total of 170,178 vulnerable individuals in specific areas identified as worst hit by famine within the four NCK Regions; Central, Lower Eastern, Nairobi and Coast . The specific areas targeted include; Kathonzi, Yatta, Ganze, Makuyu and Mathare slums.

MCK was involved in relief intervention in Upper Eastern covering the marginal districts of Meru, Isiolo, Marsabit and Moyale whereas PCEA intervened in the marginal districts of central and lower Eastern Regions covering Laikipia, Mbeere, Kitui, mwingi and Kajiado districts.

Implementing partners for Norwegian Church Aid (NCA) -IPs

- Rural Agency for Community Development and Assistance (RACIDA) and
- Full Gospel Church of Kenya (FGCK).

Rural Agency for Community Development and Assistance (RACIDA)

RACIDA is an implementing partner of the Norwegian Church Aid (NCA). It has engaged since its inception in a number of programme activities within Mandera district focusing on the felt priority areas of water and Kenya – Response to sanitation, agriculture, nutrition and health, grassroots governance and civic education as well as humanitarian efforts. Additionally RACIDA has also had substantial involvement in local efforts to boost food security and natural resources management (environmental conservation) along the Daa river basin in the Northern part of Mandera district. This includes promotion of dry land farming amongst the agro-pastoralists through water harvesting and soil conservation.

Northern Kenya being prone to natural disasters, RACIDA has been undertaking various humanitarian responses to natural disasters and conflicts. To this end, RACIDA has been an important player in emergency and relief operations in the district and continues to follow a strategy of linking relief operations with rehabilitation (including recovery preparedness) and sustainable structural development programs. In all its program interventions, RACIDA makes special efforts to link relief with recovery and with different development stakeholders in the various sectors in order to ensure a holistic and integrated development approach. Capacity building (community empowerment) takes centre stage in all activities of RACIDA while lobby and advocacy, HIV/AIDS and gender are mainstreamed, while sanitation, agriculture, nutrition and health, grassroots governance and civic education as well as humanitarian efforts. Additionally RACIDA has also had substantial involvement in local efforts to boost food security and natural resources management (environmental conservation) along the Daa river basin in the Northern part of Mandera district. This includes promotion of dry land farming amongst the agro-pastoralists through water harvesting and soil conservation.

Northern Kenya being prone to natural disasters, RACIDA has been undertaking various humanitarian responses to natural disasters and conflicts. To this end, RACIDA has been an important player in emergency and relief operations in the district and continues to follow a strategy of linking relief operations with rehabilitation (including recovery preparedness) and sustainable structural development programs. In all its program interventions, RACIDA makes special efforts to link relief with

recovery and with different development stakeholders in the various sectors in order to ensure a holistic and integrated development approach. Capacity building (community empowerment) takes centre stage in all activities of RACIDA while lobby and advocacy, HIV/AIDS and gender are mainstreamed.

Full Gospel Churches of Kenya (FGCK)

The Full Gospel Churches of Kenya (FGCK) is a countrywide church with branches in all counties except Wajir and Madera. . It is organized in administrative Regions, districts, Local Church Assemblies (LCAs) and the Branches. At least five or more branches make one (LCA), five or more local church assemblies make one District, Five Districts make one Region. There are thirteen regions, 78 Districts, over 400 LCAs and many branches. The highest authority is vested in National Executive council headed by General Overseer and General Secretary, Treasurer, Trustees and Regional Overseers, then, the Regional Executive Council, the District Council and Local Church in that order.

FGCK has both the pastoral arm responsible for church planting and growth and the National Development Projects responsible for diaconal ministry; such ministry is in Health, education, street children, HIV/AIDS, advocacy, relief, and training for capacity building among. In this respect we have clinics, ECD, primary and secondary schools, conduct training seminars in various areas and are actively involved in advocating and mitigating against drug and substance abuse, harmful cultural practices and relief work in Northern Kenya and other places especially following prolonged droughts, human conflicts in Mt Elgon and after 2007 and 8 political and tribal violence, IDPs and others.

Implementing partners for Church World Service (CWS) -IPs

- ACK Kitui Diocese and
- Community Resource Initiative

ACK Kitui Diocese

ACK Diocese of Kitui is one the 34 Dioceses forming the Anglican Church of Kenya. It covers Kitui County with Kitui town as its headquarters. The A.C.K Diocese of Kitui was created after the sub-division of the ACK Diocese of Machakos in 1995. Administratively the Lord Bishop is the head of the Diocese. Programmes within the Diocese are integral part of the Diocese and are overseen by highly experienced boards, committees and Program workers. There are policies that guide human resource operations. Staffs are appraised annually and capacity gaps addressed. There is a strong linkage with professionals for backstopping in various components of implementation.

The diocese has served as a sub grantee under CRWRC, CWS, VSO and CBM and successfully implemented several projects. The diocese has a long standing relationship with the communities, strong community structure and leadership for effective implementation of projects

The diocese has a qualified team of finance officers and a finance manual which guides internal and external controls, procurement, budgeting and monitoring systems. Accounts are audited annually by an established external audit firm.

ACK Diocese of Kitui has a team of five highly qualified staff with a total of thirty seven years of experience. The development department is compliant to USG M&E procedures. Documentation and reporting is done on time and feedback done promptly.

Previous experience in emergency response

In 2006, the diocese successfully implemented agriculture and livelihoods recovery program which assisted 1200 drought affected households construct soil and water conservation structures in their own

farms. In 2008 the diocese successfully implemented a food for work project funded by CWS which assisted drought affected households to construct 3 sand dams and one rock catchment in migwani district. Relief seeds were also distributed to farmers.

Currently the diocese is implementing water projects funded by CWS in Nzambani district. The diocesan staff in collaboration with the Ministry of Water Engineers is facilitating design of water facilities.

Relationship of the implementing partner with the ACT member and experience in emergency response

Church World Services through ACK diocese of Kitui has been in the forefront in facilitating Mwingi Communities to access water. The main focus has been improving rural livelihood by initiating and promoting water and sanitation activities.

In 2006, the Diocese successfully implemented a CWS funded survey program which resulted into clear understanding of the program area and basis for future planning.

In 2008 the diocese successfully implemented a CWS funded drought mitigation project which used food for work strategy to assist 1250 drought affected households construct 6 sand dams, 1 rock catchment and 4 shallow wells. Farm inputs (seeds) were also provided and the capacities of local farmers in Migwani district build.

In 2009 the diocese successfully implemented CWS funded water for life project which resulted into construction of additional 5 sand dams and 4 shallow wells in Nzaluni.

Currently the Diocese is implementing a climate change and water projects targeting 2,500 drought affected households in Nzambani and mwingi districts. Both projects are funded by CWS.

Community Resource Initiative (CRI)

Community Resource Initiative (CRI) is a non Governmental organization registered under Kenyan laws in the year 1995 with a vision of uplifting the living standards of poverty stricken rural population in the lower Eastern province of Kenya.

Community Resource Initiative (CRI) core business is undertaking rural development in the fields of water sanitation, Organic Farming and harnessing of surface runoff water etc. CRI is also very active in emergency response through provision of relief food and food supplements to famine stricken communities in the areas they focus their development assistance. CRI works with communities through established local structures which ensure the communities are fully involved in the implementation of, and owns the programme being executed.

CRI with support from CWS in the past has successfully completed a gravity water supply which currently is meeting the water needs of about 13,500 people in Kibwezi district. CRI has participated in ACT Alliance emergency respond appeal (AKF 91) as a CWS implementing partner in the past that Distributed relief food in Kibwezi district, Constructed 4 sand dams, 2 shallow wells, and Empowered farmers in Kibwezi on sustainable farming methods through community food security capacity development initiatives. CRI has trained farmers on farming using drip irrigation on small scale basis and in this appeal- CRI will be responding in Kibwezi District.

Implementing partners for Christian Reformed World Relief Committee (CRWRC- KENYA) -IPs

- Anglican Church of Kenya (ACK)
- Nazarene Compassionate Ministries (NCM)
- Reformed Church of East Africa (RCEA)

Anglican Church of Kenya (ACK)

ACK has a record of implementing emergency response and disaster mitigation programs in Kenya for over 20 years. They are a long-standing partner of CRWRC. The ACK Directorate of Social Services (DOSS), or Kenya national office, has a disaster preparedness and mitigation program, which started in 1996 through which they have developed adequate capacity for disaster response among their staff and their clergy. The DOSS coordinates and facilitates all ACK structures on development and relief issues. 29 Diocese spread all over the country have been clustered into 9 regions called Christian Community Services (CCS). They have been involved in relief distribution and response during the famines and droughts of 1994, 1996-97, 1999-2001, 2003, and 2004, as well as the Consortium response in 2006 and 2009 with CRWRC and NCM. ACK's regional offices have well trained staff with experience in emergency response. Each RCSS have formed relief committees who oversee the relief activities and ensure sustainability of the community structures that have been set to address emergency issues. In this drought intervention CRWRC will be partnering with the following CCS: Mt. Kenya East (MKE-CCS), Mt. Kenya (MK-CCS), and Pwani (Pwani-CCS).

Nazarene Compassionate Ministries (NCM)

NCM is a USA faith-based PVO (registered with USAID) which provides crisis response and long-range empowerment of the poor; using resources that create self-reliance, dignity and respect. NCM works with trained relief and development personnel strategically located across the 146 countries in which the Church of the Nazarene is active. NCM is particularly effective because it supports existing community level organizations, including other faith-based organizations, thus eliminating the need for costly staff. NCM and its operating partner, NCM International, have supported HIV/AIDS interventions over the past 6 years in most of the 34 African countries with Nazarene presence, including Kenya.

Reformed Church of East Africa (RCEA)

The RCEA, which was established in 1963, is based in Eldoret in the Rift Valley Province of Kenya. RCEA has a population of over 45,000 members within 450 local congregations, 48 parishes, and 4 presbyteries. The church has a strong base in the Rift Valley especially in Uasingishu and Turkana districts and some parts of Western province including Mount Elgon and Bungoma Districts. RCEA operates through parishes and extensions throughout Kenya and particularly in the Rift Valley and Western Provinces. RCEA has been a partner of CRWRC in disaster response and development since 1994. RCEA has significant congregational presence in North Rift Valley providing excellent access to communities in crisis. Their church leaders are well respected in their communities and are able to bring wide cross sections of people together for joint action. They are holistic in their approach to serving people. RCEA also has local assets, (i.e buildings for storage) which are available for use.